

HEV Fleet Testing - Summary Fact Sheet

Advanced Vehicle Testing Activity



2006 Honda Civic

VIN# JHMFA36216S019329

Vehicle Specifications

Engine: 1.3 L 4-cylinder

Electric Motor: 15 kW

Battery: NiMH

Seatbelt Positions: Five

Payload: 968 lbs

Features:

- Front disk brakes w/EBD brake assist
- ABS
- CVT transmission

See HEVAmerica Baseline Performance Fact Sheet for more information

Fleet Performance

Operating Cost:

Purchase Cost: \$26,385 (5/05)*

Sale Price: \$4,500

Maintenance Cost: \$0.02/mile

Operating Cost: \$0.10/mile**

Total Ownership Cost: \$0.26/mile

Description:

This vehicle is operated throughout the valley of Phoenix, Arizona by JP Morgan Chase Bank of Arizona's courier fleet. It is operated six days a week, transferring documents between branches and a central processing center on city streets and urban freeways.

Operating Performance:

Total miles driven: 160,709

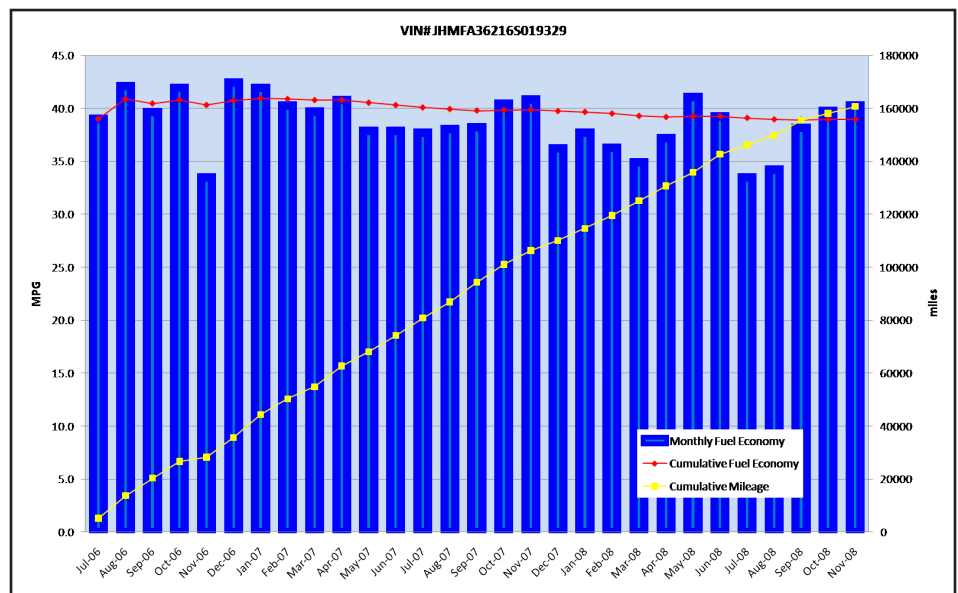
Cumulative MPG: 38.9

Major Operations & Maintenance Events:

None

*Purchase includes dealer price with options plus taxes. It does not include title, license, registration, extended warranty or delivery fee costs.

**Operating costs includes insurance, fuel, and registration costs



Monthly MPG = (miles driven)/(gallons of fuel purchased). Monthly variation in reported MPG may occur due to the difference in fuel tank level at the beginning and end of the month.