

HEV Fleet Testing - Summary Fact Sheet



Advanced Vehicle Testing Activity

2004 Chevrolet Silverado

VIN# 1GCEC19T34Z309284

Vehicle Specifications

Engine: 5.3 L V8

Electric Motor: 14 kW

Battery: Lead acid

Seatbelt Positions: Five

Features:

Onboard 20 A, 2.4 kW generator

Regenerative braking

Auto engine start/stop

See HEVAmerica Baseline Performance Fact Sheet for more information

Fleet Performance

Operating Cost:

Off Lease: 8/07

Purchase Cost: \$16,215 (8/07)*

Sale Price: \$2,400

Maintenance Cost: \$0.04/mile

Operating Cost: \$0.21/mile**

Total Ownership Cost: \$0.48/mile

Description:

This vehicle is operated throughout the valley of Phoenix, Arizona by JP Morgan Chase Bank of Arizona's courier fleet. It is operated six days a week, transferring documents between branches and a central processing center on city streets and urban freeways.

Operating Performance:

Total miles driven: 160,539

Cumulative MPG: 18.0

Major Operations & Maintenance Events:

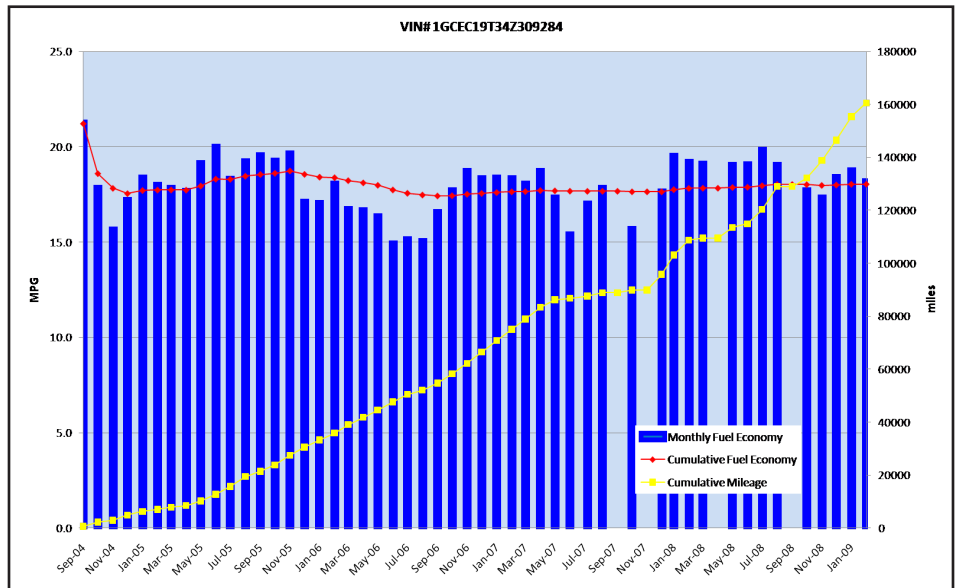
Replaced oil pressure gauge instrument
86,299 mi Cost: \$646.15

Replaced TFP manual valve position
switch @ 89,065 mi Cost: \$680.23

Replaced Hybrid battery @ 109,851 mi
Cost: \$1,241.31

*Purchase includes dealer price with options plus taxes. It does not include title, license, registration, extended warranty or delivery fee costs.

**Operating costs includes insurance, fuel, and registration costs



Monthly MPG = (miles driven)/(gallons of fuel purchased). Monthly variation in reported MPG may occur due to the difference in fuel tank level at the beginning and end of the month.