

HEV Fleet Testing - Summary Fact Sheet



Advanced Vehicle Testing Activity

2007 Toyota Camry

VIN# JTNBB46K673006330

Vehicle Specifications

- Engine:** 2.4 L 4-cylinder
- Electric Motor:** 105 kW
- Battery:** NiMH
- Seatbelt Positions:** Five
- Payload:** 1,109 lbs
- Features:**

- Four-wheel disk brakes
- ABS w/brake assist
- Electronic CVT transmission

See HEVAmerica Baseline Performance Fact Sheet for more information

Fleet Performance

Operating Cost:

- Purchase Cost: \$32,960 (6/06)*
- Sale Price: \$6,000
- Maintenance Cost: \$0.02/mile
- Operating Cost: \$0.12/mile**
- Total Ownership Cost: \$0.31/mile

Description:

This vehicle is operated throughout the valley of Phoenix, Arizona by JP Morgan Chase Bank of Arizona's courier fleet. It is operated six days a week, transferring documents between branches and a central processing center on city streets and urban freeways.

Operating Performance:

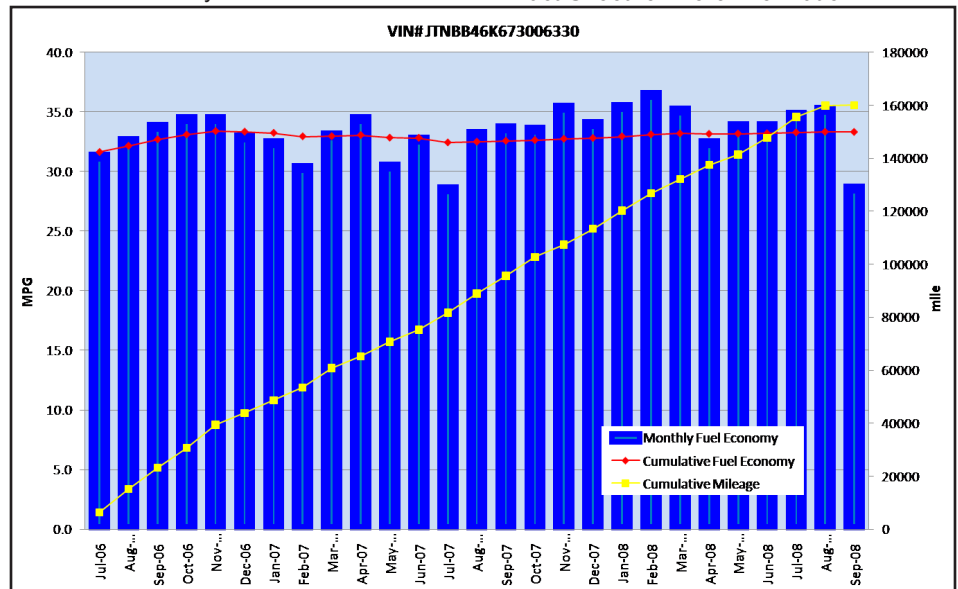
- Total miles driven: 160,164
- Cumulative MPG: 34.1

Major Operations & Maintenance Events:

None

*Purchase includes dealer price with options plus taxes. It does not include title, license, registration, extended warranty or delivery fee costs.

**Operating costs includes insurance, fuel, and registration costs



Monthly MPG = (miles driven)/(gallons of fuel purchased). Monthly variation in reported MPG may occur due to the difference in fuel tank level at the beginning and end of the month.