

HEV Fleet Testing - Summary Fact Sheet



Advanced Vehicle Testing Activity

2007 Saturn Vue

VIN# 5GZCZ33Z37S813344

Vehicle Specifications

Engine: 2.4 L 4 cylinder

Electric Motor: 14.5 kW

Battery: NiMH

Seatbelt Positions: Five

Payload: 1,244 lbs

Features:

Regenerative braking w/ABS

4 wheel independent suspension

4 speed automatic transmission

See HEVAmerica Baseline Performance Fact Sheet for more information

Fleet Performance

Operating Cost:

Purchase Cost: \$26,858 (11/06)*

Sale Price: \$14,592.14

Maintenance Cost: \$0.03/mile

Operating Cost: \$0.17/mile**

Total Ownership Cost: \$0.31/mile

Description:

This vehicle is operated throughout the valley of Phoenix, Arizona by JP Morgan Chase Bank of Arizona's courier fleet. It is operated six days a week, transferring documents between branches and a central processing center on city streets and urban freeways.

Operating Performance:

Total miles driven: 102,934

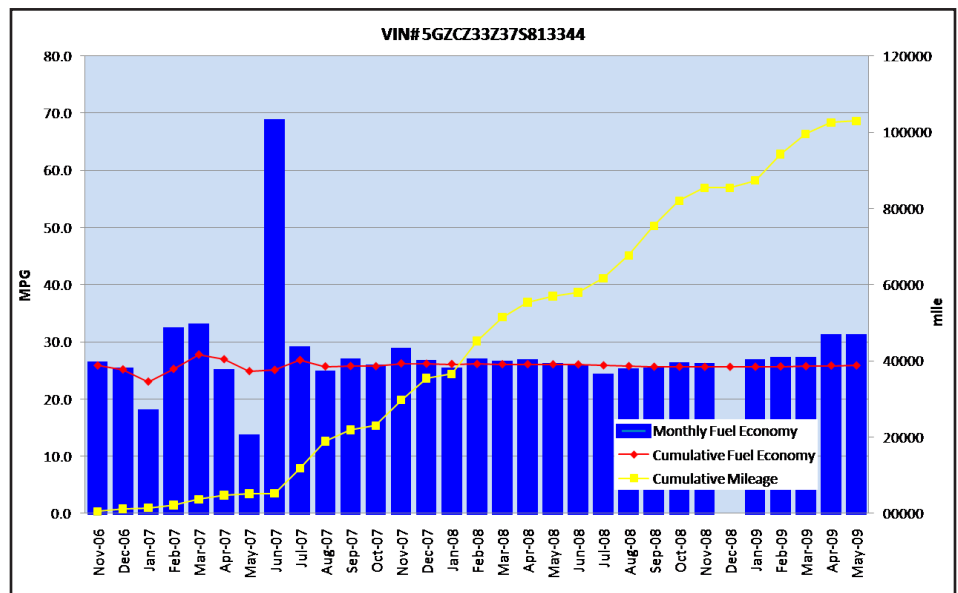
Cumulative MPG: 25.7

Major Operations & Maintenance Events:

None

*Purchase includes dealer price with options plus taxes. It does not include title, license, registration, extended warranty or delivery fee costs.

**Operating costs includes insurance, fuel, and registration costs



Monthly MPG = (miles driven)/(gallons of fuel purchased). Monthly variation in reported MPG may occur due to the difference in fuel tank level at the beginning and end of the month.