

HEV Fleet Testing - Summary Fact Sheet



Advanced Vehicle Testing Activity

2004 Toyota Prius
VIN# JTDKB20U740012721

Vehicle Specifications

- Engine:** 1.5 L 4-cylinder
- Electric Motor:** 50 kW
- Battery:** NiMH
- Seatbelt Positions:** Five
- Payload:** 905 lbs
- Features:**
 - CVT transmission
 - Regenerative braking

Fleet Performance

Operating Cost:

- Purchase Cost: \$23,725 (10/03)*
- Kelly Used Vehicle Price: \$6,850 (3/10)
- Sale Price: In operation
- Maintenance Cost: \$0.02/mile
- Operating Cost: \$0.09/mile**
- Total Ownership Cost: \$0.22/mile

Description:

This vehicle is operated throughout the valley of Phoenix, Arizona by JP Morgan Chase Bank of Arizona's courier fleet. It is operated six days a week, transferring documents between branches and a central processing center on city streets and urban freeways.

See HEVAmerica Baseline Performance Fact Sheet for more information

Operating Performance:

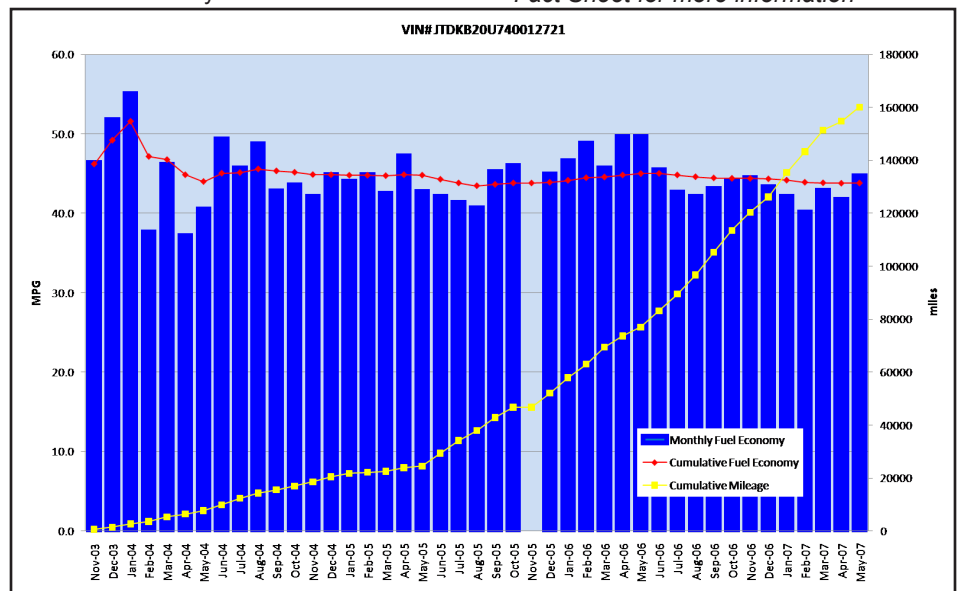
- Total miles driven: 160,115
- Cumulative MPG: 43.8

Major Operations & Maintenance

Events:
None

*Purchase includes dealer price with options plus taxes. It does not include title, license, registration, extended warranty or delivery fee costs.

**Operating costs includes insurance, fuel, and registration costs



Monthly MPG = (miles driven)/(gallons of fuel purchased). Monthly variation in reported MPG may occur due to the difference in fuel tank level at the beginning and end of the month.