

# HEV Fleet Testing - Summary Fact Sheet



## Advanced Vehicle Testing Activity

### 2005 Honda Accord

VIN# JHMCN36495C000657

### Vehicle Specifications

- Engine:** 3.0 L V6
- Electric Motor:** 11.9 kW
- Battery:** NiMH
- Seatbelt Positions:** Five
- Payload:** 952 lbs
- Features:**
  - Front wheel drive
  - Regenerative braking

### Fleet Performance

#### Operating Cost:

- Purchase Cost: \$32,945 (12/04)\*
- Sale Price: \$4,500
- Maintenance Cost: \$0.03/mile
- Operating Cost: \$0.13/mile\*\*
- Total Ownership Cost: \$0.34/mile

#### Description:

This vehicle is operated throughout the valley of Phoenix, Arizona by JP Morgan Chase Bank of Arizona's courier fleet. It is operated six days a week, transferring documents between branches and a central processing center on city streets and urban freeways.

See HEVAmerica Baseline Performance Fact Sheet for more information

#### Operating Performance:

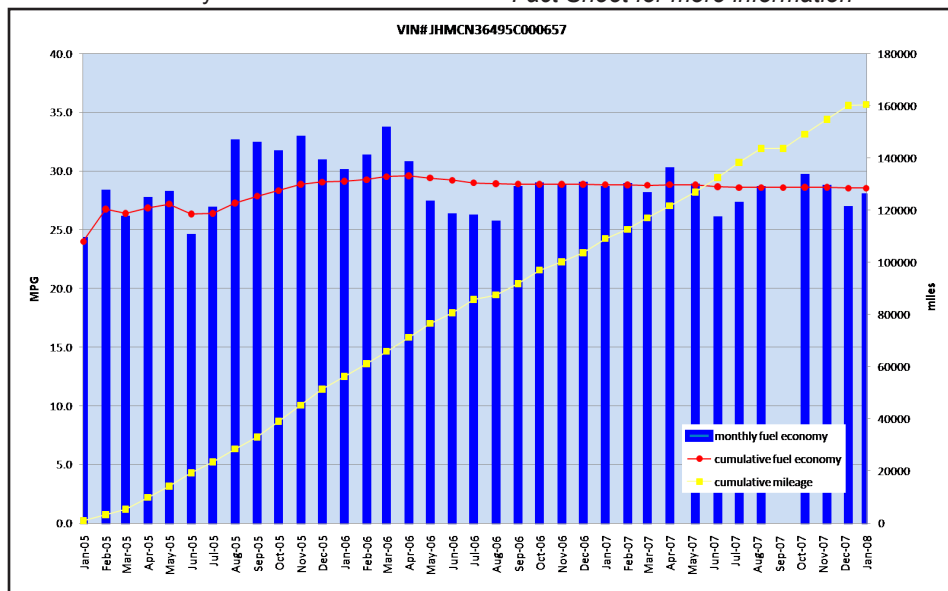
- Total miles driven: 160,457
- Cumulative MPG: 28.5

#### Major Operations & Maintenance

**Events:**  
None

\*Purchase includes dealer price with options plus taxes. It does not include title, license, registration, extended warranty or delivery fee costs.

\*\*Operating costs includes insurance, fuel, and registration costs



Monthly MPG = (miles driven)/(gallons of fuel purchased). Monthly variation in reported MPG may occur due to the difference in fuel tank level at the beginning and end of the month.