

Operating Costs

2013 Ford Focus Hatchback

VIN: 1FADP3R42DL268207



Vehicle Specifications

- Engine:** n/a
- Electric Motor:** 107 kW AC Induction
- Battery:** Lithium-Ion
- Class:** Compact
- Seatbelt Positions:** Five
- Payload:** 906 lbs

See Vehicle Specifications and Testing Results for more information

Fleet Performance

Operating Cost:

- Purchase Cost: \$42,069¹
- Purchase Date: December 2013
- Resale Value as of 11/2016: \$6,505²
- Sale Price: In Operation
- Maintenance Cost: \$0.00/mile
- Operating Cost: \$0.27/mile³
- Total Ownership Cost: \$1.98/mile⁴

Operating Performance:

- Total miles driven: 20,875
- Cumulative MPG: 0.0
- Cumulative AC Wh/mi: 364.840

Major Operations & Maintenance Events:

¹Purchase includes dealer price with options plus taxes. It does not include title, license, registration, extended warranty or delivery fee costs.

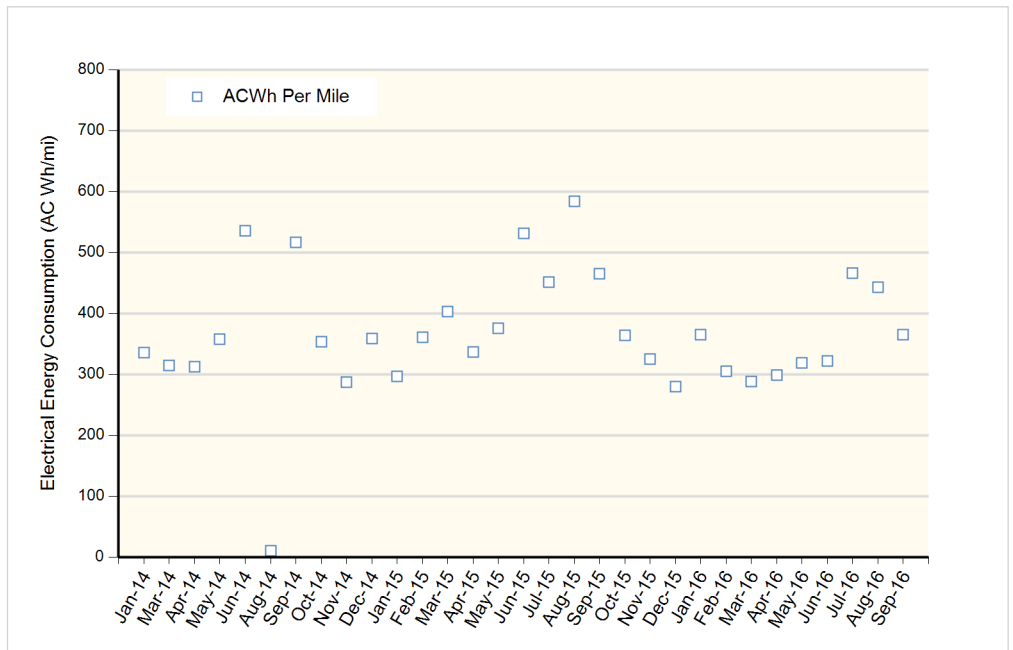
²Per Kelley Blue Book private resale estimate, www.kbb.com.

³Operating costs includes insurance, fuel, and registration costs

⁴Total ownership includes maintenance, operating, and capital depreciation

Description of Vehicle Usage:

This vehicle is operated by various commercial vehicle fleets throughout the Southwestern United States covering a mixture of city and highway routes. This vehicle is operated five to seven days a week functioning as a typical vehicle in the overall fleet.



Monthly MPG = (miles driven)/(gallons of fuel purchased). Monthly variation in reported MPG may occur due to the difference in fuel tank level at the beginning and end of the month