

On-Road Usage and Performance Summary for 2014 BMW i3 EV VIN 5655

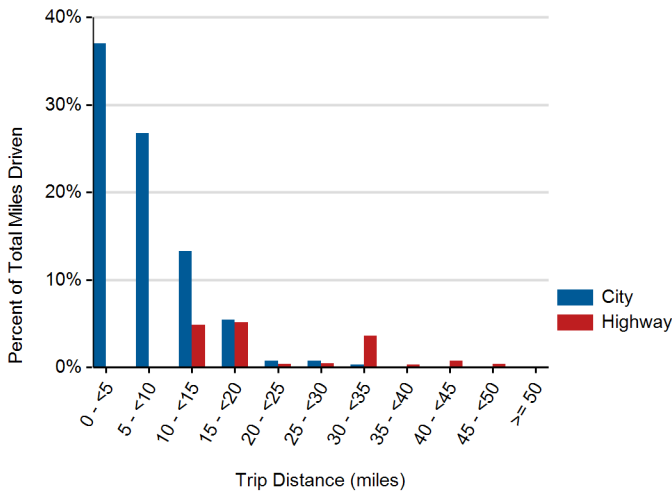
Reporting Period: December 2014 through May 2016

Usage and Performance Statistics¹

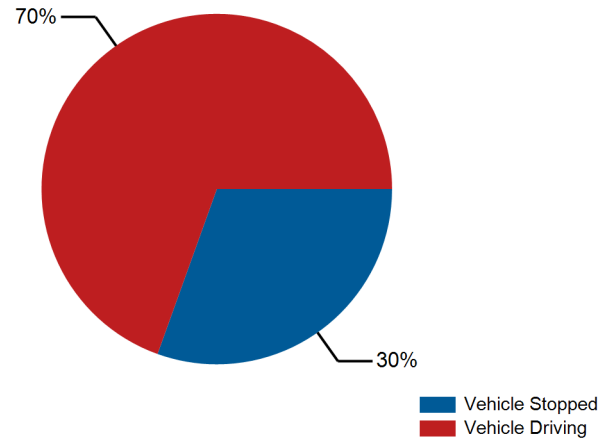
| | |
|--|-----------|
| Overall DC electrical energy consumption (DC Wh/mi) | 261 |
| Total distance driven (mi) | 12,109 |
| Average trip distance (mi) | 3.9 |
| Percent of miles city highway ² | 84% 16% |
| Average ambient temperature (deg F) | --- |
| Percent of time driven with air conditioning selected | 95% |
| Average number of charging events per day when driven | 1.9 |
| Average distance driven between charging events (miles) | 28.1 |
| Average number of trips between charging events | 7.5 |
| Average energy discharged between charging events (DC kWh) | 7.6 |



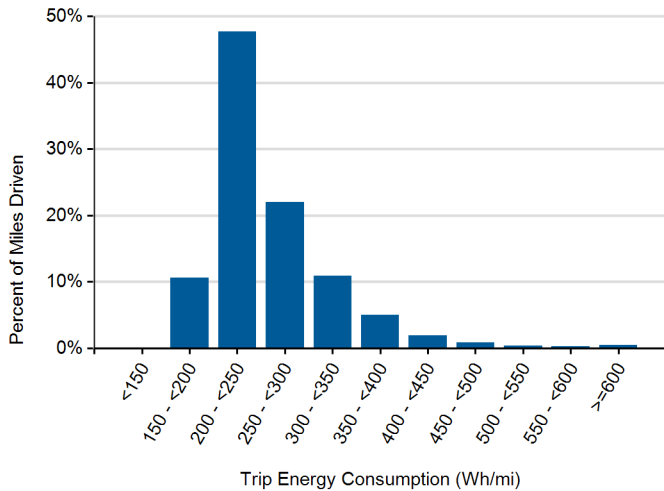
Distribution of Trip Distance by Trip Type¹



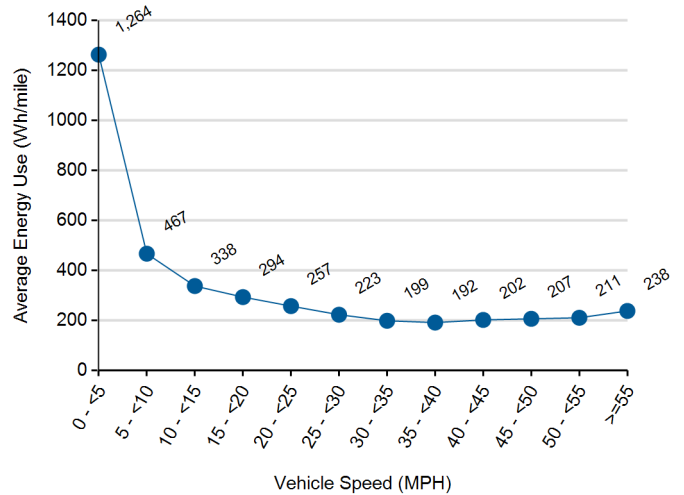
Percent of Drive Time by Operating Mode¹



Distribution of Trip Energy Consumption¹



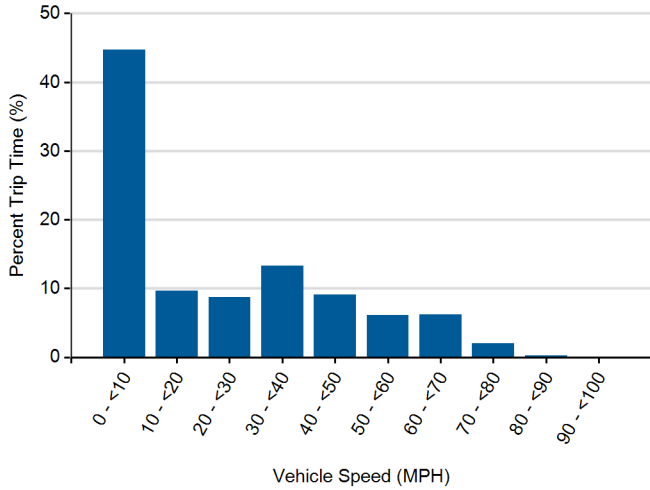
Energy Consumption at Speed¹



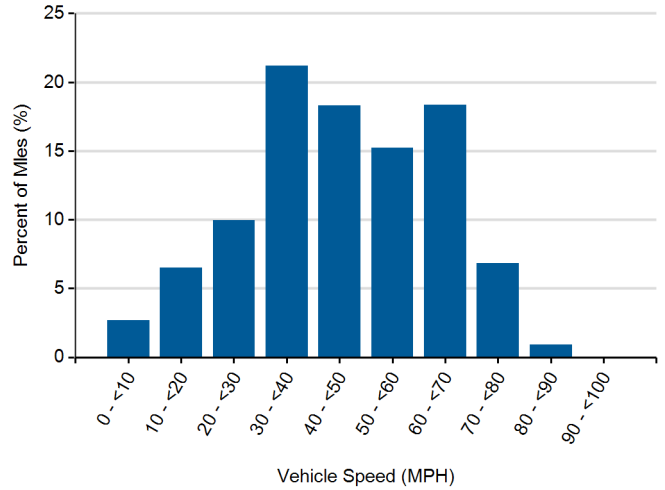
1. Calculated from on-board electronic data logged over 12,109 miles, which may be a subset of total lifetime miles driven.

2. Calculated based upon trip average driving speed per SAE J2841.

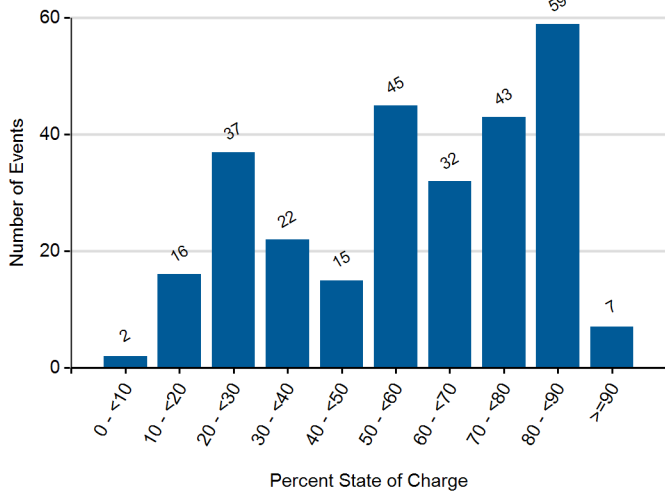
Distribution of Driving Time by Vehicle Speed¹



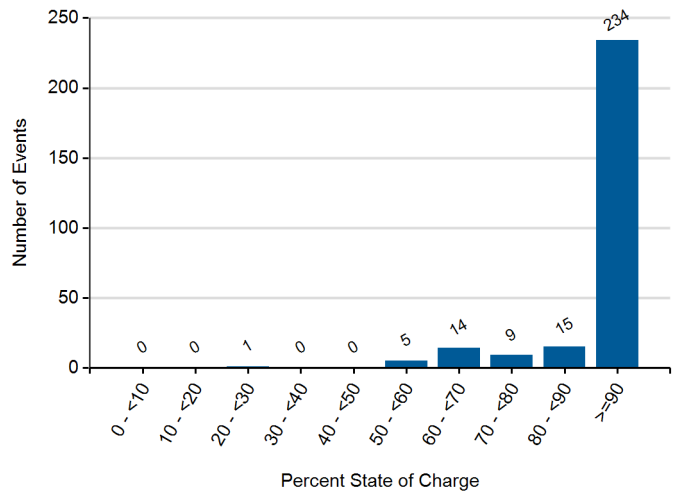
Distribution of Driving Distance by Vehicle Speed¹



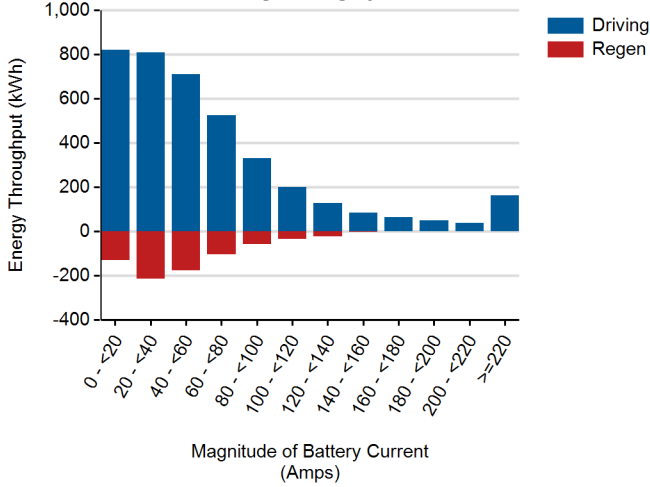
Battery State of Charge at End of Drive Prior to Plugging In¹



Battery State of Charge at End of Charge Prior to Driving¹



Battery Energy Throughput During Driving by Current¹



Battery Energy Throughput During Driving by Pack Temperature¹

No Data Available