

On-Road Usage and Performance Summary for 2013 Nissan Leaf S VIN 7885

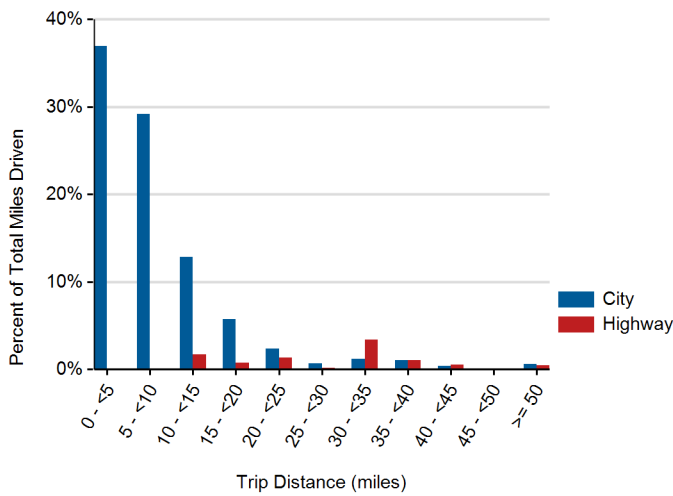
Reporting Period: January 2014 through May 2016

Usage and Performance Statistics¹

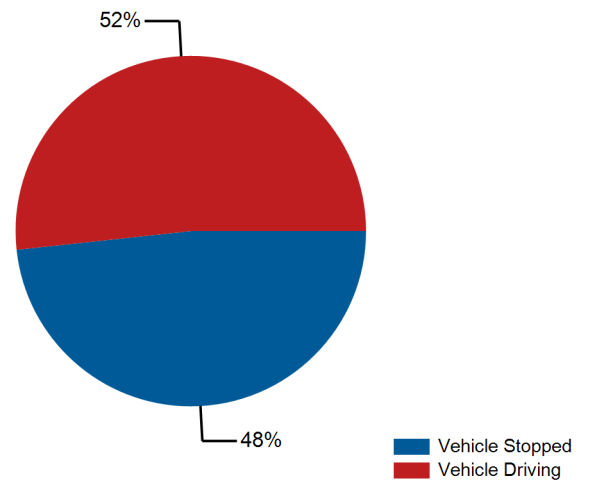
Overall DC electrical energy consumption (DC Wh/mi)	253
Total distance driven (mi)	24,548
Average trip distance (mi)	4.3
Percent of miles city highway ²	91% 9%
Average ambient temperature (deg F)	86.1
Percent of time driven with air conditioning selected	90%
Average number of charging events per day when driven	1.8
Average distance driven between charging events (miles)	27.7
Average number of trips between charging events	7.1
Average energy discharged between charging events (DC kWh)	7.0



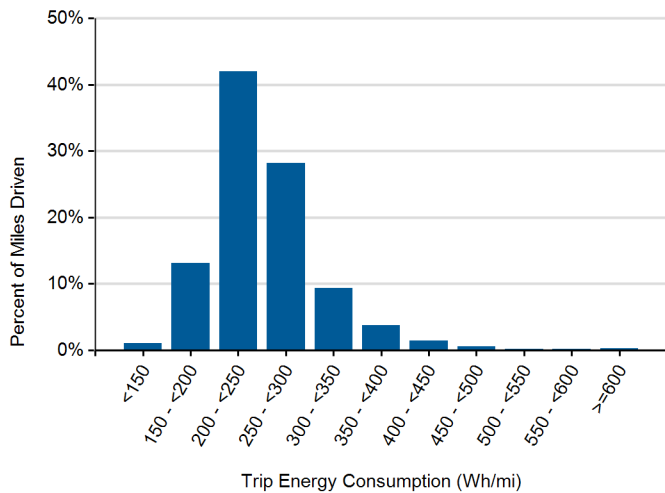
Distribution of Trip Distance by Trip Type¹



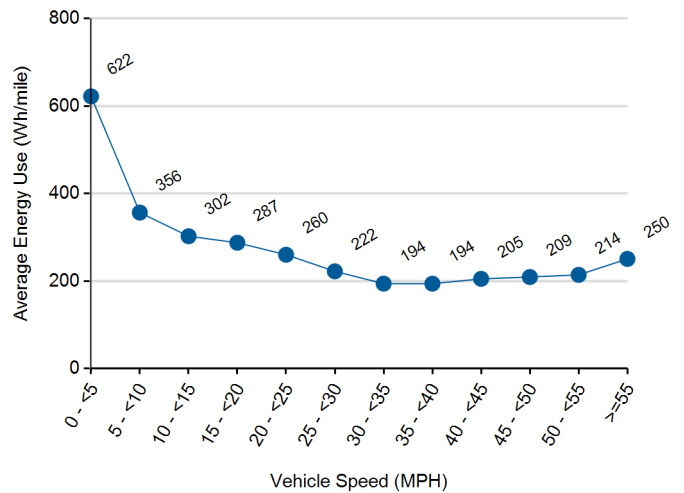
Percent of Drive Time by Operating Mode¹



Distribution of Trip Energy Consumption¹

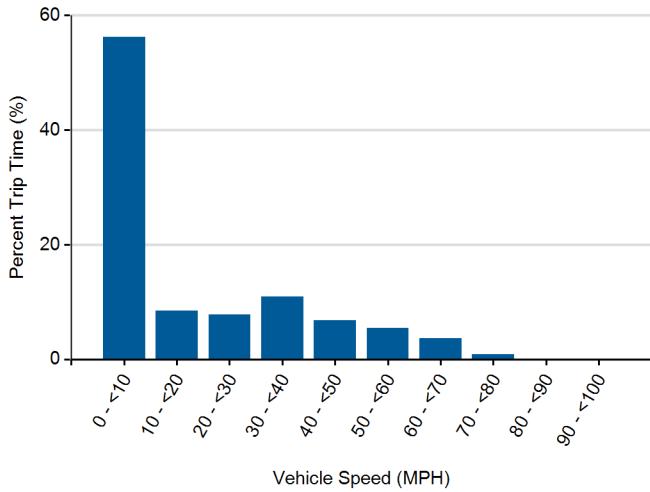


Energy Consumption at Speed¹

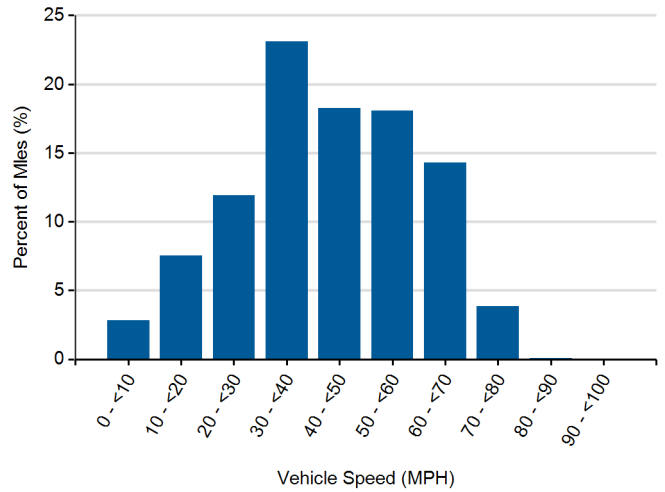


1. Calculated from on-board electronic data logged over 24,548 miles, which may be a subset of total lifetime miles driven.
 2. Calculated based upon trip average driving speed per SAE J2841.

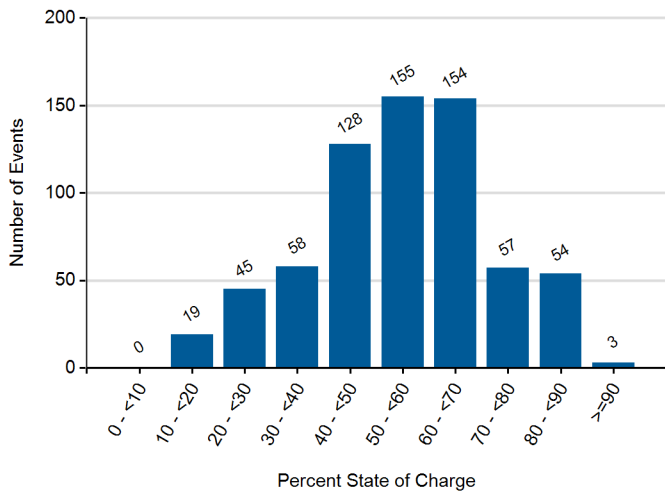
Distribution of Driving Time by Vehicle Speed¹



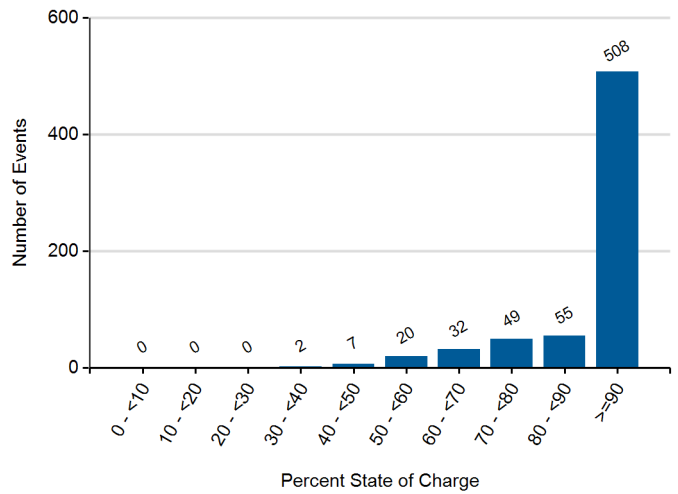
Distribution of Driving Distance by Vehicle Speed¹



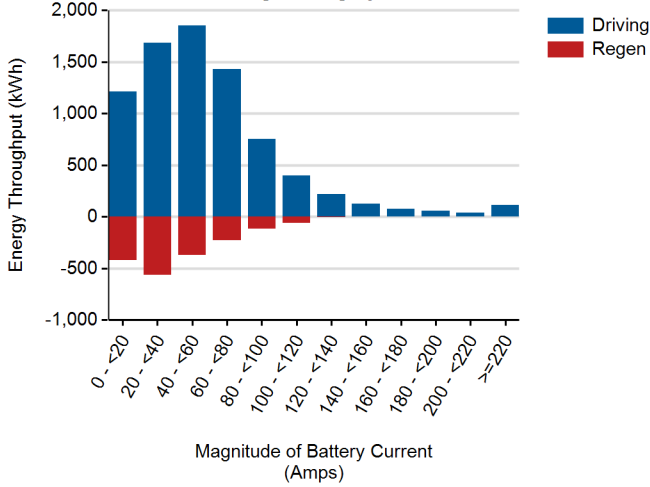
Battery State of Charge at End of Drive Prior to Plugging In¹



Battery State of Charge at End of Charge Prior to Driving¹



Battery Energy Throughput During Driving by Current¹



Battery Energy Throughput During Driving by Pack Temperature¹

No Data Available