

## EV Project Chevrolet Volt Vehicle Summary Report

Region: ALL

Number of vehicles: 1611

Reporting period: October 2013 through December 2013

### Vehicle Usage

Overall gasoline fuel economy (mpg)	121
Overall electrical energy consumption (AC Wh/mi)	239
Number of trips <sup>1</sup>	559,680
Total distance traveled (mi)	4,673,200
Avg trip distance (mi) <sup>2</sup>	8.2
Avg distance traveled per day when the vehicle was driven (mi)	39.8
Avg number of trips between charging events	3.3
Avg distance traveled between charging events (mi)	27.2
Avg number of charging events per day when the vehicle was driven	1.5

### Electric Vehicle Mode (EV) Operation

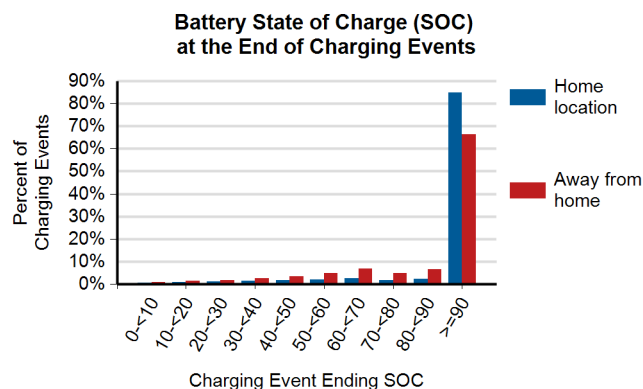
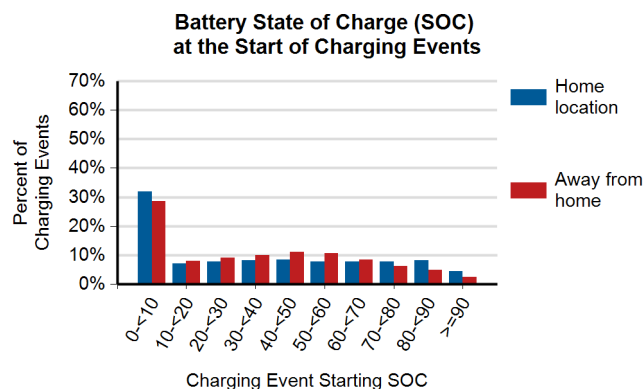
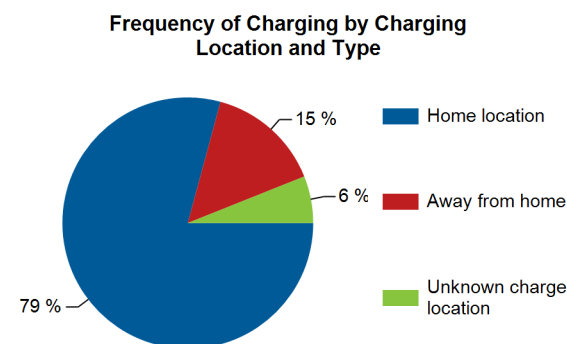
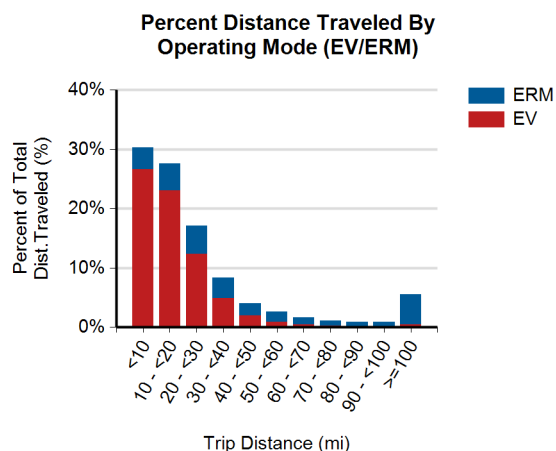
Gasoline fuel economy (mpg)	No Fuel Used
AC electrical energy consumption (AC Wh/mi)	337
Distance traveled (mi)	3,320,662
Percent of total distance traveled	71.1%

### Extended Range Mode (ERM) Operation

Gasoline fuel economy (mpg)	35.1
AC electrical energy consumption (AC Wh/mi)	No Elec. Used
Distance traveled (mi)	1,352,538
Percent of total distance traveled	28.9%

### Charging Location

	Home charging location <sup>3</sup>	Away-from-home charging locations <sup>4</sup>	Unknown charging locations <sup>5</sup>
Total number of charging events	133,937	24,949	10,225
Percent of all charging events	79%	15%	6%



1. A trip is defined as all the driving done between consecutive "key-on" and "key-off" events when some distance was traveled.
2. Averages shown in this report are based on a subset of the total miles traveled.
3. Charging events at the "home charging location" refer to charging events performed at the location where the vehicle owner's home charging unit is installed.
4. Charging events at "away-from-home charging locations" refer to charging events performed at any location other than the vehicle's "home charging location."
5. Charging events at "unknown charging locations" were performed when the vehicle's location relative to its "home charging location" is not known, due to GPS data anomalies.

## EV Project Chevrolet Volt Vehicle Summary Report

Region: Phoenix, AZ Metropolitan Area

Number of vehicles: 108

Reporting period: October 2013 through December 2013

### Vehicle Usage

Overall gasoline fuel economy (mpg)	152
Overall electrical energy consumption (AC Wh/mi)	230
Number of trips <sup>1</sup>	40,891
Total distance traveled (mi)	328,463
Avg trip distance (mi) <sup>2</sup>	7.9
Avg distance traveled per day when the vehicle was driven (mi)	39.9
Avg number of trips between charging events	3.4
Avg distance traveled between charging events (mi)	26.7
Avg number of charging events per day when the vehicle was driven	1.5

### Electric Vehicle Mode (EV) Operation

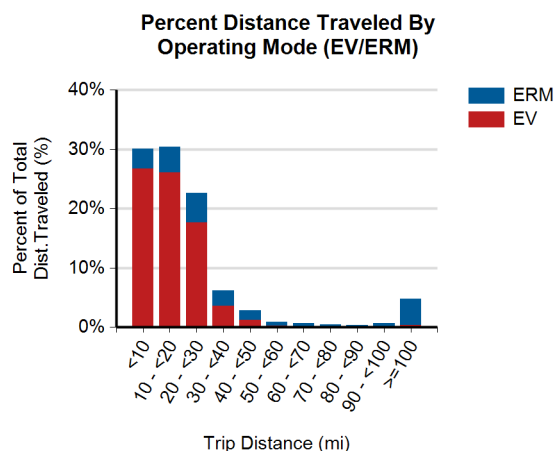
Gasoline fuel economy (mpg)	No Fuel Used
AC electrical energy consumption (AC Wh/mi)	302
Distance traveled (mi)	249,610
Percent of total distance traveled	76.0%

### Extended Range Mode (ERM) Operation

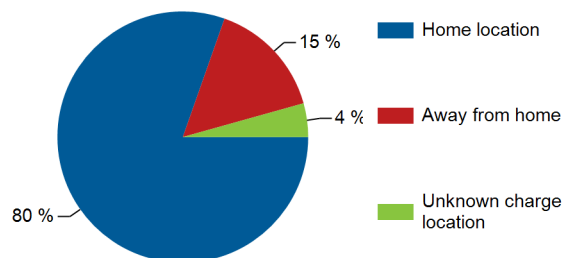
Gasoline fuel economy (mpg)	36.6
AC electrical energy consumption (AC Wh/mi)	No Elec. Used
Distance traveled (mi)	78,854
Percent of total distance traveled	24.0%

### Charging Location

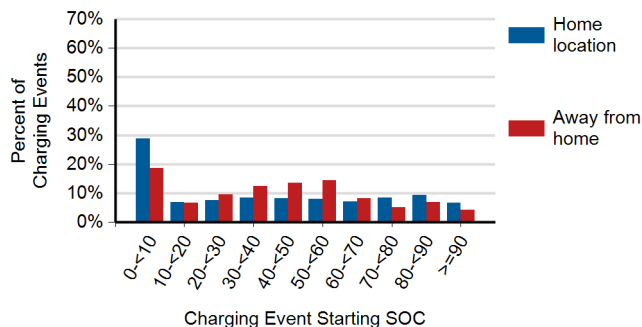
	Home charging location <sup>3</sup>	Away-from-home charging locations <sup>4</sup>	Unknown charging locations <sup>5</sup>
Total number of charging events	9,764	1,854	526
Percent of all charging events	80%	15%	4%



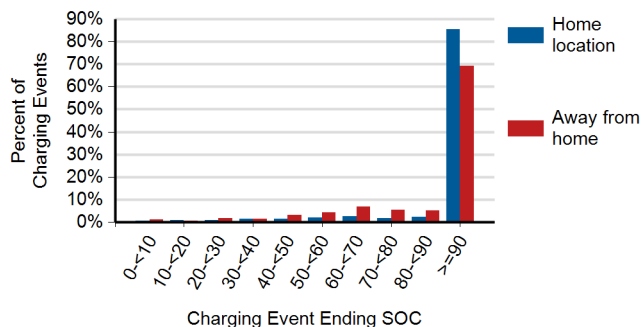
### Frequency of Charging by Charging Location and Type



### Battery State of Charge (SOC) at the Start of Charging Events



### Battery State of Charge (SOC) at the End of Charging Events



1. A trip is defined as all the driving done between consecutive "key-on" and "key-off" events when some distance was traveled.

2. Averages shown in this report are based on a subset of the total miles traveled.

3. Charging events at the "home charging location" refer to charging events performed at the location where the vehicle owner's home charging unit is installed.

4. Charging events at "away-from-home charging locations" refer to charging events performed at any location other than the vehicle's "home charging location."

5. Charging events at "unknown charging locations" were performed when the vehicle's location relative to its "home charging location" is not known, due to GPS data anomalies.

## EV Project Chevrolet Volt Vehicle Summary Report

Region: Los Angeles, CA Metropolitan Area

Number of vehicles: 280

Reporting period: October 2013 through December 2013

### Vehicle Usage

Overall gasoline fuel economy (mpg)	133
Overall electrical energy consumption (AC Wh/mi)	235
Number of trips <sup>1</sup>	99,522
Total distance traveled (mi)	777,890
Avg trip distance (mi) <sup>2</sup>	7.7
Avg distance traveled per day when the vehicle was driven (mi)	38.0
Avg number of trips between charging events	3.8
Avg distance traveled between charging events (mi)	28.9
Avg number of charging events per day when the vehicle was driven	1.3

### Electric Vehicle Mode (EV) Operation

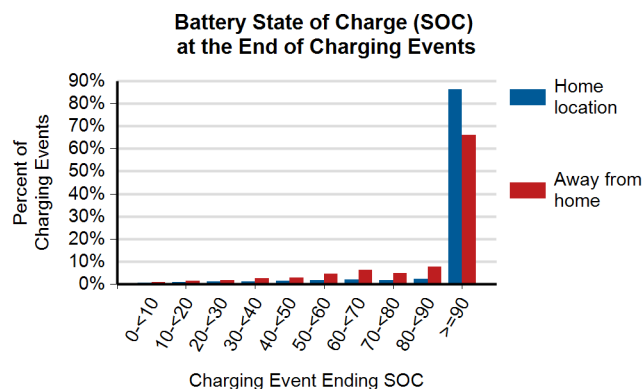
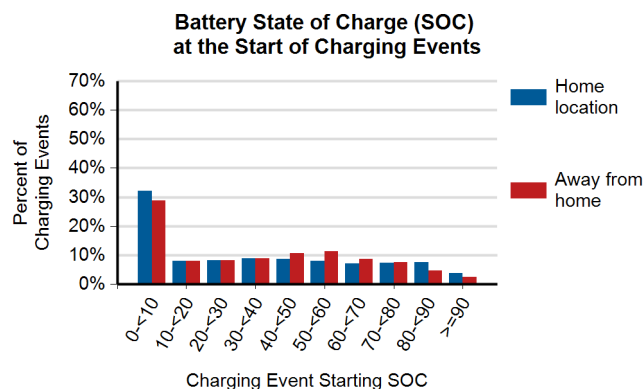
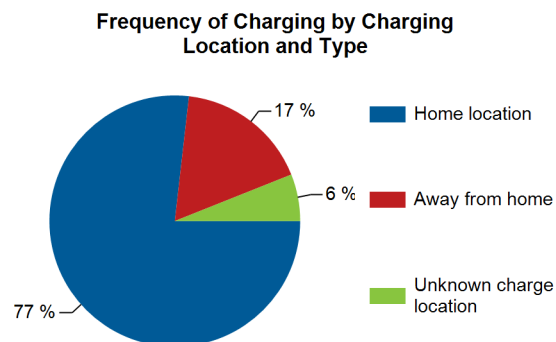
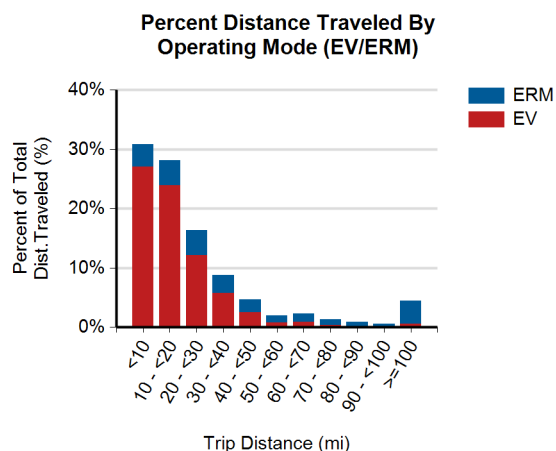
Gasoline fuel economy (mpg)	No Fuel Used
AC electrical energy consumption (AC Wh/mi)	317
Distance traveled (mi)	575,475
Percent of total distance traveled	74.0%

### Extended Range Mode (ERM) Operation

Gasoline fuel economy (mpg)	34.6
AC electrical energy consumption (AC Wh/mi)	No Elec. Used
Distance traveled (mi)	202,414
Percent of total distance traveled	26.0%

### Charging Location

	Home charging location <sup>3</sup>	Away-from-home charging locations <sup>4</sup>	Unknown charging locations <sup>5</sup>
Total number of charging events	20,272	4,529	1,593
Percent of all charging events	77%	17%	6%



1. A trip is defined as all the driving done between consecutive "key-on" and "key-off" events when some distance was traveled.
2. Averages shown in this report are based on a subset of the total miles traveled.
3. Charging events at the "home charging location" refer to charging events performed at the location where the vehicle owner's home charging unit is installed.
4. Charging events at "away-from-home charging locations" refer to charging events performed at any location other than the vehicle's "home charging location."
5. Charging events at "unknown charging locations" were performed when the vehicle's location relative to its "home charging location" is not known, due to GPS data anomalies.

## EV Project Chevrolet Volt Vehicle Summary Report

Region: San Diego, CA Metropolitan Area

Number of vehicles: 216

Reporting period: October 2013 through December 2013

### Vehicle Usage

Overall gasoline fuel economy (mpg)	118
Overall electrical energy consumption (AC Wh/mi)	228
Number of trips <sup>1</sup>	71,886
Total distance traveled (mi)	611,913
Avg trip distance (mi) <sup>2</sup>	8.2
Avg distance traveled per day when the vehicle was driven (mi)	39.6
Avg number of trips between charging events	3.7
Avg distance traveled between charging events (mi)	30.1
Avg number of charging events per day when the vehicle was driven	1.3

### Electric Vehicle Mode (EV) Operation

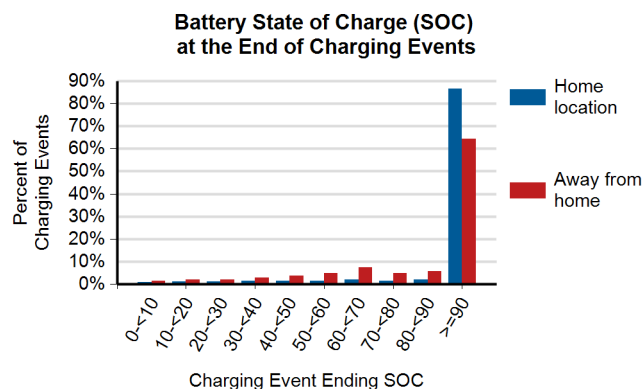
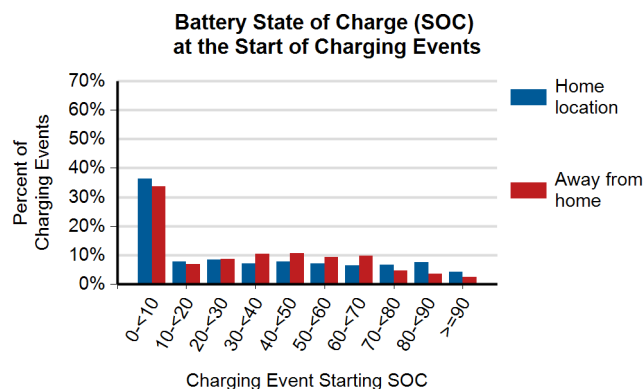
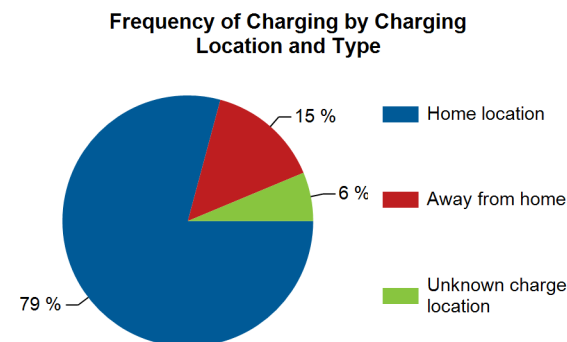
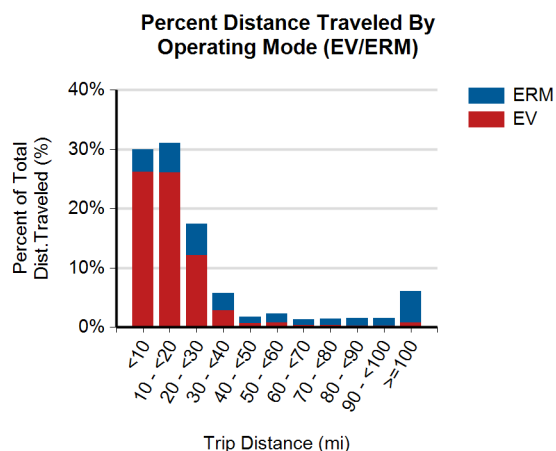
Gasoline fuel economy (mpg)	No Fuel Used
AC electrical energy consumption (AC Wh/mi)	324
Distance traveled (mi)	430,798
Percent of total distance traveled	70.4%

### Extended Range Mode (ERM) Operation

Gasoline fuel economy (mpg)	34.9
AC electrical energy consumption (AC Wh/mi)	No Elec. Used
Distance traveled (mi)	181,115
Percent of total distance traveled	29.6%

### Charging Location

	Home charging location <sup>3</sup>	Away-from-home charging locations <sup>4</sup>	Unknown charging locations <sup>5</sup>
Total number of charging events	15,578	2,859	1,236
Percent of all charging events	79%	15%	6%



1. A trip is defined as all the driving done between consecutive "key-on" and "key-off" events when some distance was traveled.
2. Averages shown in this report are based on a subset of the total miles traveled.
3. Charging events at the "home charging location" refer to charging events performed at the location where the vehicle owner's home charging unit is installed.
4. Charging events at "away-from-home charging locations" refer to charging events performed at any location other than the vehicle's "home charging location."
5. Charging events at "unknown charging locations" were performed when the vehicle's location relative to its "home charging location" is not known, due to GPS data anomalies.

## EV Project Chevrolet Volt Vehicle Summary Report

Region: Washington, D.C. Metropolitan Area

Number of vehicles: 225

Reporting period: October 2013 through December 2013

### Vehicle Usage

Overall gasoline fuel economy (mpg)	120
Overall electrical energy consumption (AC Wh/mi)	237
Number of trips <sup>1</sup>	71,532
Total distance traveled (mi)	672,478
Avg trip distance (mi) <sup>2</sup>	9.3
Avg distance traveled per day when the vehicle was driven (mi)	41.4
Avg number of trips between charging events	3.0
Avg distance traveled between charging events (mi)	28.1
Avg number of charging events per day when the vehicle was driven	1.5

### Electric Vehicle Mode (EV) Operation

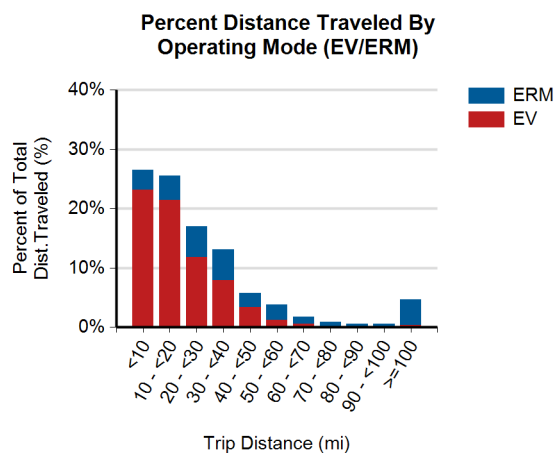
Gasoline fuel economy (mpg)	No Fuel Used
AC electrical energy consumption (AC Wh/mi)	340
Distance traveled (mi)	469,871
Percent of total distance traveled	69.9%

### Extended Range Mode (ERM) Operation

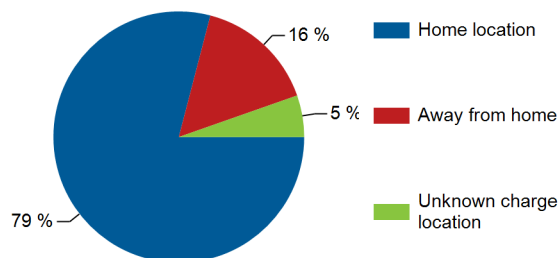
Gasoline fuel economy (mpg)	36.2
AC electrical energy consumption (AC Wh/mi)	No Elec. Used
Distance traveled (mi)	202,607
Percent of total distance traveled	30.1%

### Charging Location

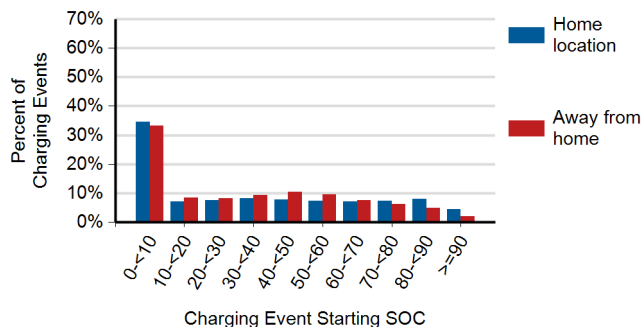
	Home charging location <sup>3</sup>	Away-from-home charging locations <sup>4</sup>	Unknown charging locations <sup>5</sup>
Total number of charging events	18,751	3,695	1,273
Percent of all charging events	79%	16%	5%



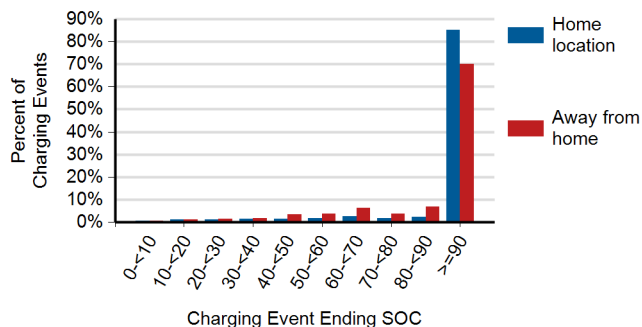
### Frequency of Charging by Charging Location and Type



### Battery State of Charge (SOC) at the Start of Charging Events



### Battery State of Charge (SOC) at the End of Charging Events



1. A trip is defined as all the driving done between consecutive "key-on" and "key-off" events when some distance was traveled.

2. Averages shown in this report are based on a subset of the total miles traveled.

3. Charging events at the "home charging location" refer to charging events performed at the location where the vehicle owner's home charging unit is installed.

4. Charging events at "away-from-home charging locations" refer to charging events performed at any location other than the vehicle's "home charging location."

5. Charging events at "unknown charging locations" were performed when the vehicle's location relative to its "home charging location" is not known, due to GPS data anomalies.

## EV Project Chevrolet Volt Vehicle Summary Report

Region: Oregon

Number of vehicles: 115

Reporting period: October 2013 through December 2013

### Vehicle Usage

Overall gasoline fuel economy (mpg)	135
Overall electrical energy consumption (AC Wh/mi)	279
Number of trips <sup>1</sup>	40,424
Total distance traveled (mi)	294,107
Avg trip distance (mi) <sup>2</sup>	7.2
Avg distance traveled per day when the vehicle was driven (mi)	35.5
Avg number of trips between charging events	3.1
Avg distance traveled between charging events (mi)	22.3
Avg number of charging events per day when the vehicle was driven	1.6

### Electric Vehicle Mode (EV) Operation

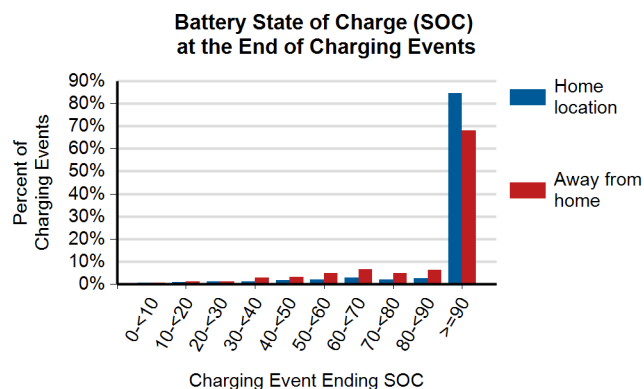
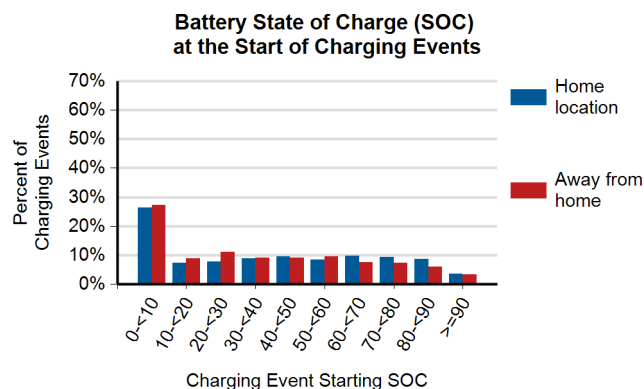
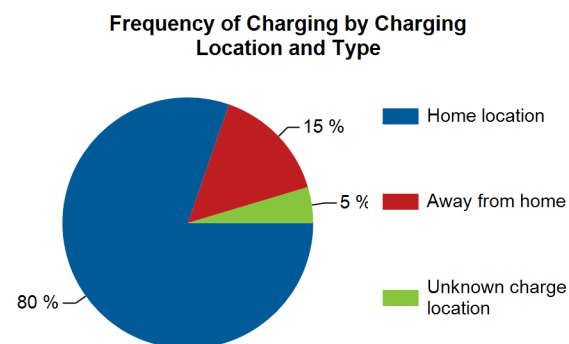
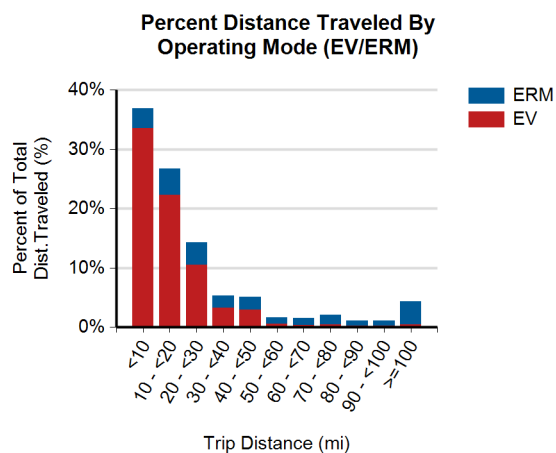
Gasoline fuel economy (mpg)	No Fuel Used
AC electrical energy consumption (AC Wh/mi)	376
Distance traveled (mi)	218,121
Percent of total distance traveled	74.2%

### Extended Range Mode (ERM) Operation

Gasoline fuel economy (mpg)	34.9
AC electrical energy consumption (AC Wh/mi)	No Elec. Used
Distance traveled (mi)	75,985
Percent of total distance traveled	25.8%

### Charging Location

	Home charging location <sup>3</sup>	Away-from-home charging locations <sup>4</sup>	Unknown charging locations <sup>5</sup>
Total number of charging events	10,404	1,950	599
Percent of all charging events	80%	15%	5%



1. A trip is defined as all the driving done between consecutive "key-on" and "key-off" events when some distance was traveled.

2. Averages shown in this report are based on a subset of the total miles traveled.

3. Charging events at the "home charging location" refer to charging events performed at the location where the vehicle owner's home charging unit is installed.

4. Charging events at "away-from-home charging locations" refer to charging events performed at any location other than the vehicle's "home charging location."

5. Charging events at "unknown charging locations" were performed when the vehicle's location relative to its "home charging location" is not known, due to GPS data anomalies.

## EV Project Chevrolet Volt Vehicle Summary Report

Region: Chattanooga, TN Metropolitan Area

Number of vehicles: 11

Reporting period: October 2013 through December 2013

### Vehicle Usage

Overall gasoline fuel economy (mpg)	83
Overall electrical energy consumption (AC Wh/mi)	180
Number of trips <sup>1</sup>	3,827
Total distance traveled (mi)	39,186
Avg trip distance (mi) <sup>2</sup>	10.2
Avg distance traveled per day when the vehicle was driven (mi)	50.2
Avg number of trips between charging events	3.7
Avg distance traveled between charging events (mi)	38.1
Avg number of charging events per day when the vehicle was driven	1.3

### Electric Vehicle Mode (EV) Operation

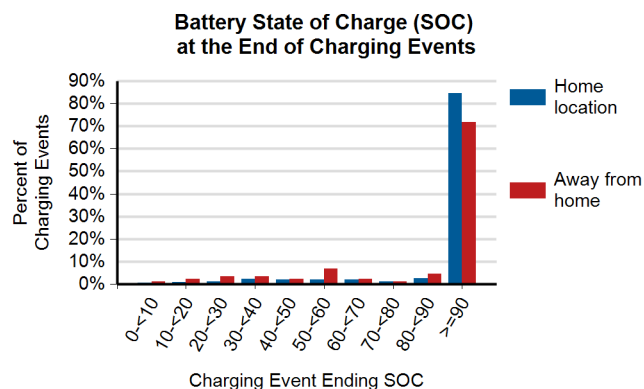
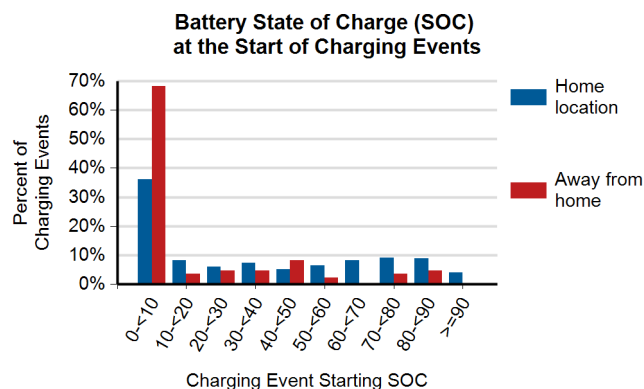
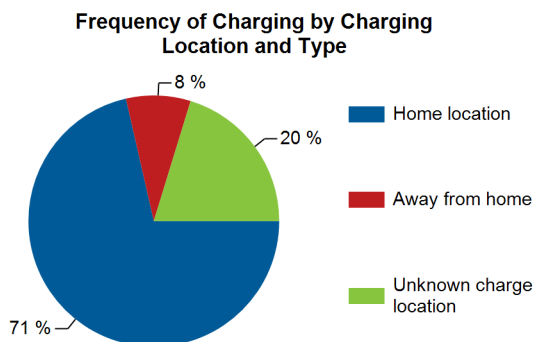
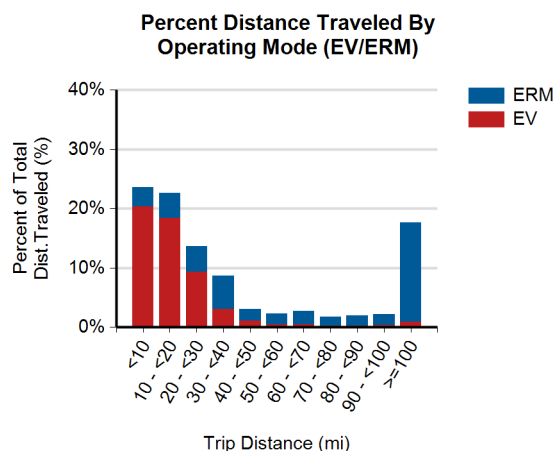
Gasoline fuel economy (mpg)	No Fuel Used
AC electrical energy consumption (AC Wh/mi)	329
Distance traveled (mi)	21,397
Percent of total distance traveled	54.6%

### Extended Range Mode (ERM) Operation

Gasoline fuel economy (mpg)	37.8
AC electrical energy consumption (AC Wh/mi)	No Elec. Used
Distance traveled (mi)	17,789
Percent of total distance traveled	45.4%

### Charging Location

	Home charging location <sup>3</sup>	Away-from-home charging locations <sup>4</sup>	Unknown charging locations <sup>5</sup>
Total number of charging events	730	85	207
Percent of all charging events	71%	8%	20%



1. A trip is defined as all the driving done between consecutive "key-on" and "key-off" events when some distance was traveled.
2. Averages shown in this report are based on a subset of the total miles traveled.
3. Charging events at the "home charging location" refer to charging events performed at the location where the vehicle owner's home charging unit is installed.
4. Charging events at "away-from-home charging locations" refer to charging events performed at any location other than the vehicle's "home charging location."
5. Charging events at "unknown charging locations" were performed when the vehicle's location relative to its "home charging location" is not known, due to GPS data anomalies.



## EV Project Chevrolet Volt Vehicle Summary Report

Region: Knoxville, TN Metropolitan Area

Number of vehicles: 28

Reporting period: October 2013 through December 2013

### Vehicle Usage

Overall gasoline fuel economy (mpg)	101
Overall electrical energy consumption (AC Wh/mi)	219
Number of trips <sup>1</sup>	9,729
Total distance traveled (mi)	89,445
Avg trip distance (mi) <sup>2</sup>	9.2
Avg distance traveled per day when the vehicle was driven (mi)	47.5
Avg number of trips between charging events	3.2
Avg distance traveled between charging events (mi)	29.5
Avg number of charging events per day when the vehicle was driven	1.6

### Electric Vehicle Mode (EV) Operation

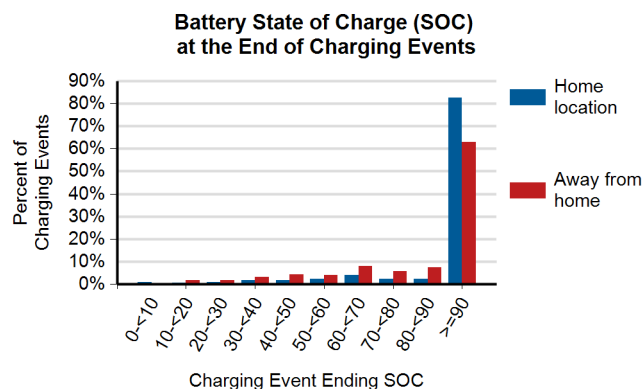
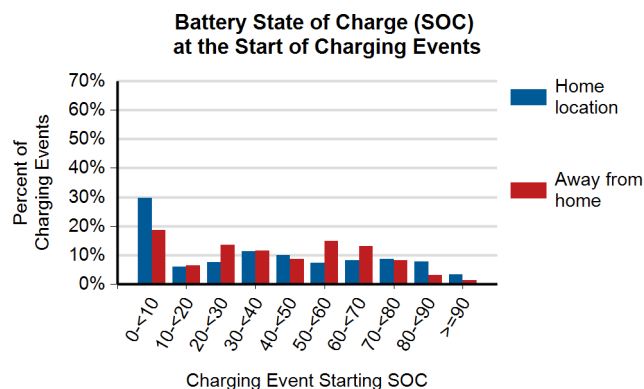
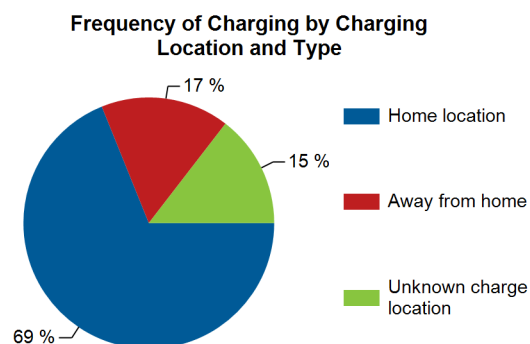
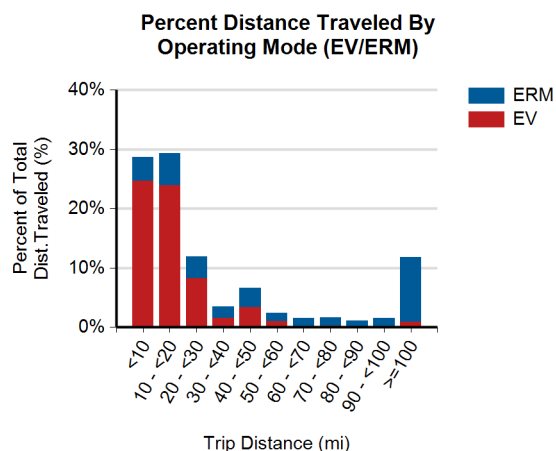
Gasoline fuel economy (mpg)	No Fuel Used
AC electrical energy consumption (AC Wh/mi)	342
Distance traveled (mi)	57,414
Percent of total distance traveled	64.2%

### Extended Range Mode (ERM) Operation

Gasoline fuel economy (mpg)	36.2
AC electrical energy consumption (AC Wh/mi)	No Elec. Used
Distance traveled (mi)	32,032
Percent of total distance traveled	35.8%

### Charging Location

	Home charging location <sup>3</sup>	Away-from-home charging locations <sup>4</sup>	Unknown charging locations <sup>5</sup>
Total number of charging events	2,081	501	439
Percent of all charging events	69%	17%	15%



1. A trip is defined as all the driving done between consecutive "key-on" and "key-off" events when some distance was traveled.
2. Averages shown in this report are based on a subset of the total miles traveled.
3. Charging events at the "home charging location" refer to charging events performed at the location where the vehicle owner's home charging unit is installed.
4. Charging events at "away-from-home charging locations" refer to charging events performed at any location other than the vehicle's "home charging location."
5. Charging events at "unknown charging locations" were performed when the vehicle's location relative to its "home charging location" is not known, due to GPS data anomalies.



## EV Project Chevrolet Volt Vehicle Summary Report

Region: Memphis, TN Metropolitan Area

Number of vehicles: 23

Reporting period: October 2013 through December 2013

### Vehicle Usage

Overall gasoline fuel economy (mpg)	105
Overall electrical energy consumption (AC Wh/mi)	217
Number of trips <sup>1</sup>	7,847
Total distance traveled (mi)	67,019
Avg trip distance (mi) <sup>2</sup>	8.5
Avg distance traveled per day when the vehicle was driven (mi)	43.0
Avg number of trips between charging events	3.4
Avg distance traveled between charging events (mi)	28.7
Avg number of charging events per day when the vehicle was driven	1.5

### Electric Vehicle Mode (EV) Operation

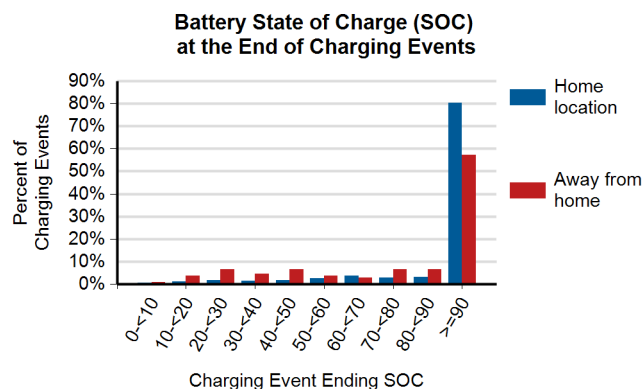
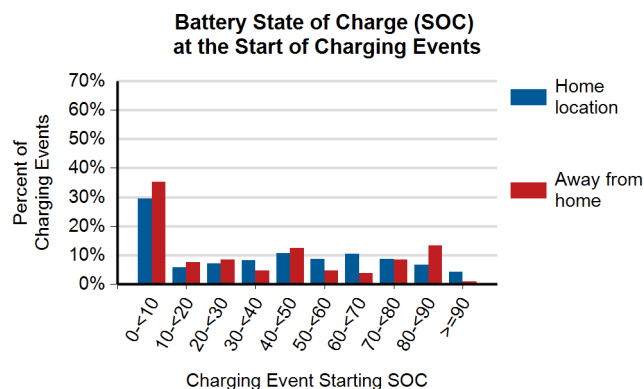
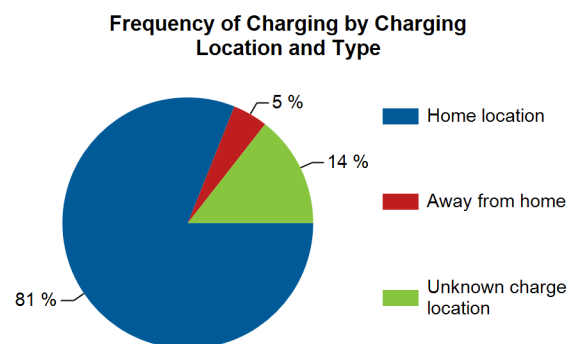
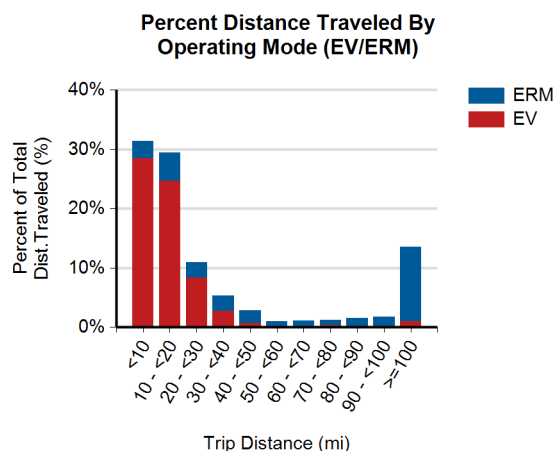
Gasoline fuel economy (mpg)	No Fuel Used
AC electrical energy consumption (AC Wh/mi)	324
Distance traveled (mi)	44,874
Percent of total distance traveled	67.0%

### Extended Range Mode (ERM) Operation

Gasoline fuel economy (mpg)	34.7
AC electrical energy consumption (AC Wh/mi)	No Elec. Used
Distance traveled (mi)	22,145
Percent of total distance traveled	33.0%

### Charging Location

	Home charging location <sup>3</sup>	Away-from-home charging locations <sup>4</sup>	Unknown charging locations <sup>5</sup>
Total number of charging events	1,883	105	335
Percent of all charging events	81%	5%	14%



1. A trip is defined as all the driving done between consecutive "key-on" and "key-off" events when some distance was traveled.

2. Averages shown in this report are based on a subset of the total miles traveled.

3. Charging events at the "home charging location" refer to charging events performed at the location where the vehicle owner's home charging unit is installed.

4. Charging events at "away-from-home charging locations" refer to charging events performed at any location other than the vehicle's "home charging location."

5. Charging events at "unknown charging locations" were performed when the vehicle's location relative to its "home charging location" is not known, due to GPS data anomalies.

## EV Project Chevrolet Volt Vehicle Summary Report

Region: Nashville, TN Metropolitan Area

Number of vehicles: 46

Reporting period: October 2013 through December 2013

### Vehicle Usage

Overall gasoline fuel economy (mpg)	113
Overall electrical energy consumption (AC Wh/mi)	232
Number of trips <sup>1</sup>	15,840
Total distance traveled (mi)	141,998
Avg trip distance (mi) <sup>2</sup>	8.7
Avg distance traveled per day when the vehicle was driven (mi)	42.0
Avg number of trips between charging events	3.2
Avg distance traveled between charging events (mi)	28.2
Avg number of charging events per day when the vehicle was driven	1.5

### Electric Vehicle Mode (EV) Operation

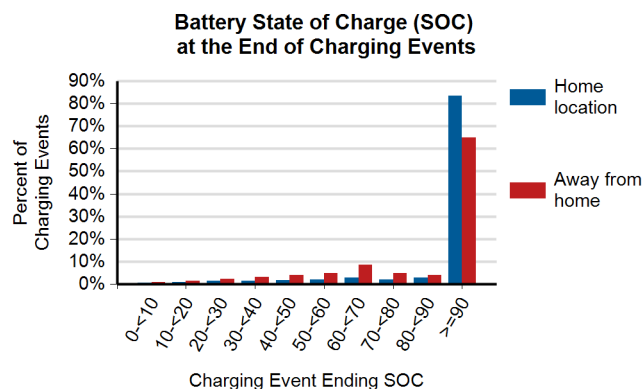
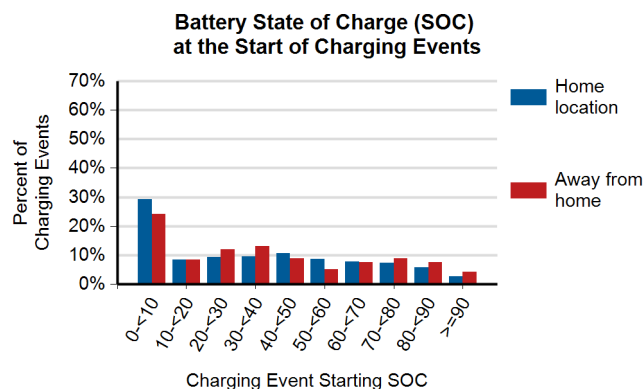
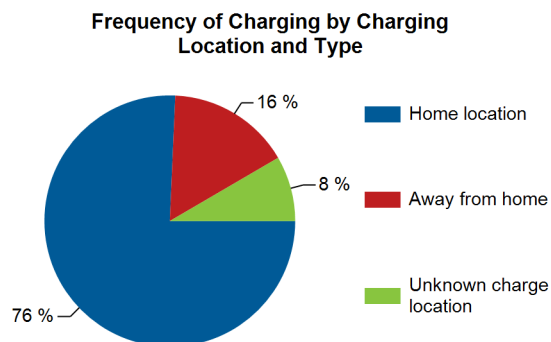
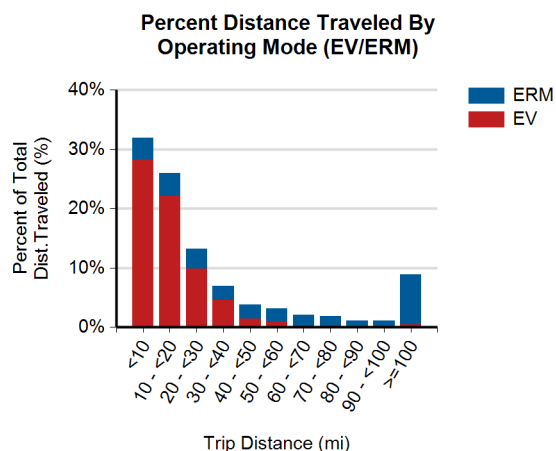
Gasoline fuel economy (mpg)	No Fuel Used
AC electrical energy consumption (AC Wh/mi)	341
Distance traveled (mi)	96,640
Percent of total distance traveled	68.1%

### Extended Range Mode (ERM) Operation

Gasoline fuel economy (mpg)	36.1
AC electrical energy consumption (AC Wh/mi)	No Elec. Used
Distance traveled (mi)	45,359
Percent of total distance traveled	31.9%

### Charging Location

	Home charging location <sup>3</sup>	Away-from-home charging locations <sup>4</sup>	Unknown charging locations <sup>5</sup>
Total number of charging events	3,714	780	412
Percent of all charging events	76%	16%	8%



1. A trip is defined as all the driving done between consecutive "key-on" and "key-off" events when some distance was traveled.

2. Averages shown in this report are based on a subset of the total miles traveled.

3. Charging events at the "home charging location" refer to charging events performed at the location where the vehicle owner's home charging unit is installed.

4. Charging events at "away-from-home charging locations" refer to charging events performed at any location other than the vehicle's "home charging location."

5. Charging events at "unknown charging locations" were performed when the vehicle's location relative to its "home charging location" is not known, due to GPS data anomalies.

## EV Project Chevrolet Volt Vehicle Summary Report

Region: Dallas/Ft. Worth, TX Metropolitan Area

Number of vehicles: 151

Reporting period: October 2013 through December 2013

### Vehicle Usage

Overall gasoline fuel economy (mpg)	127
Overall electrical energy consumption (AC Wh/mi)	239
Number of trips <sup>1</sup>	52,726
Total distance traveled (mi)	435,901
Avg trip distance (mi) <sup>2</sup>	8.2
Avg distance traveled per day when the vehicle was driven (mi)	39.7
Avg number of trips between charging events	3.1
Avg distance traveled between charging events (mi)	25.6
Avg number of charging events per day when the vehicle was driven	1.5

### Electric Vehicle Mode (EV) Operation

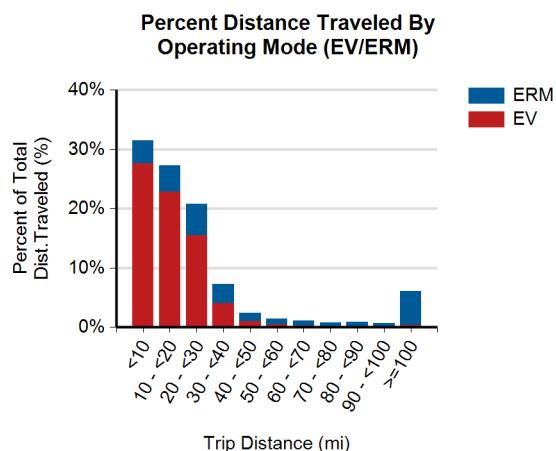
Gasoline fuel economy (mpg)	No Fuel Used
AC electrical energy consumption (AC Wh/mi)	331
Distance traveled (mi)	315,027
Percent of total distance traveled	72.3%

### Extended Range Mode (ERM) Operation

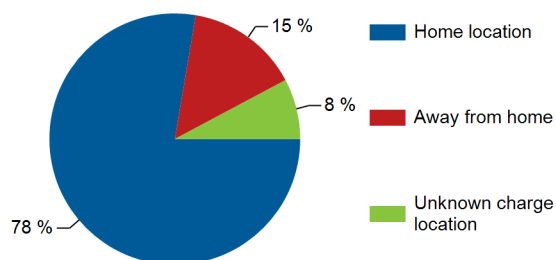
Gasoline fuel economy (mpg)	35.2
AC electrical energy consumption (AC Wh/mi)	No Elec. Used
Distance traveled (mi)	120,874
Percent of total distance traveled	27.7%

### Charging Location

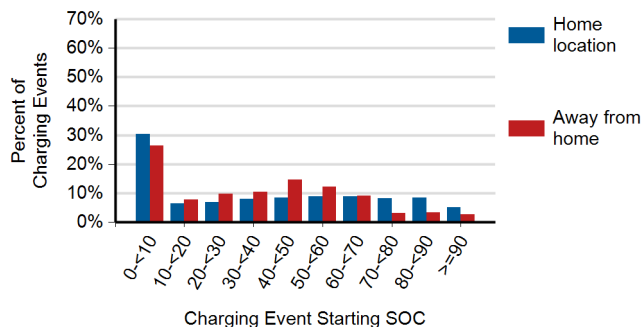
	Home charging location <sup>3</sup>	Away-from-home charging locations <sup>4</sup>	Unknown charging locations <sup>5</sup>
Total number of charging events	13,092	2,452	1,311
Percent of all charging events	78%	15%	8%



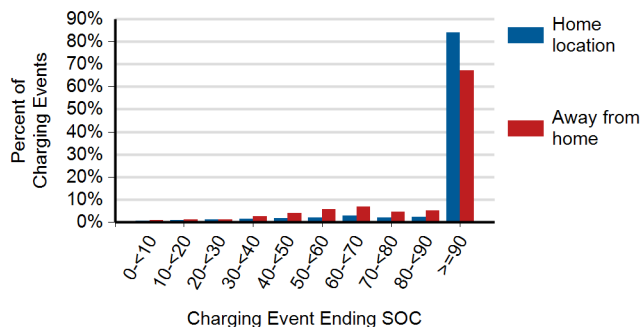
### Frequency of Charging by Charging Location and Type



### Battery State of Charge (SOC) at the Start of Charging Events



### Battery State of Charge (SOC) at the End of Charging Events



1. A trip is defined as all the driving done between consecutive "key-on" and "key-off" events when some distance was traveled.

2. Averages shown in this report are based on a subset of the total miles traveled.

3. Charging events at the "home charging location" refer to charging events performed at the location where the vehicle owner's home charging unit is installed.

4. Charging events at "away-from-home charging locations" refer to charging events performed at any location other than the vehicle's "home charging location."

5. Charging events at "unknown charging locations" were performed when the vehicle's location relative to its "home charging location" is not known, due to GPS data anomalies.

## EV Project Chevrolet Volt Vehicle Summary Report

Region: Houston, TX Metropolitan Area

Number of vehicles: 65

Reporting period: October 2013 through December 2013

### Vehicle Usage

Overall gasoline fuel economy (mpg)	130
Overall electrical energy consumption (AC Wh/mi)	231
Number of trips <sup>1</sup>	22,810
Total distance traveled (mi)	185,838
Avg trip distance (mi) <sup>2</sup>	8.0
Avg distance traveled per day when the vehicle was driven (mi)	38.9
Avg number of trips between charging events	3.2
Avg distance traveled between charging events (mi)	25.8
Avg number of charging events per day when the vehicle was driven	1.5

### Electric Vehicle Mode (EV) Operation

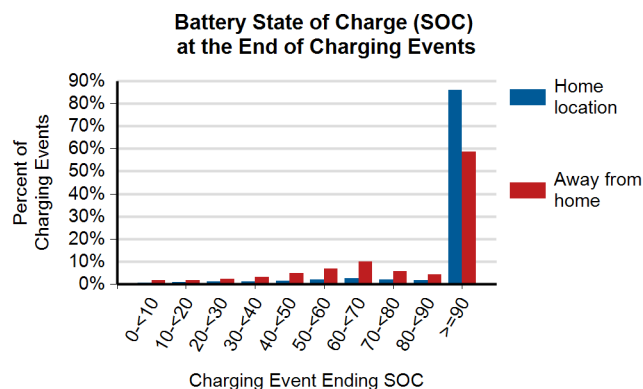
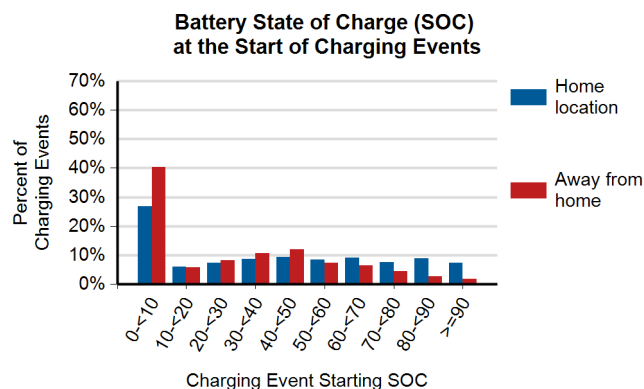
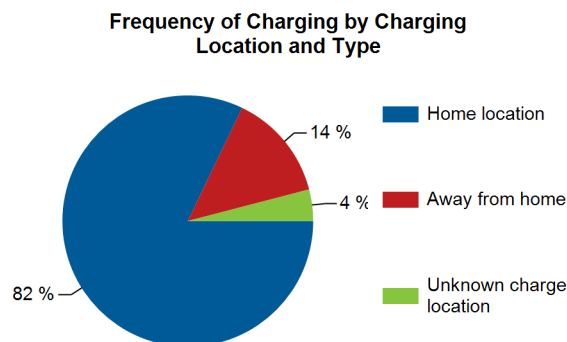
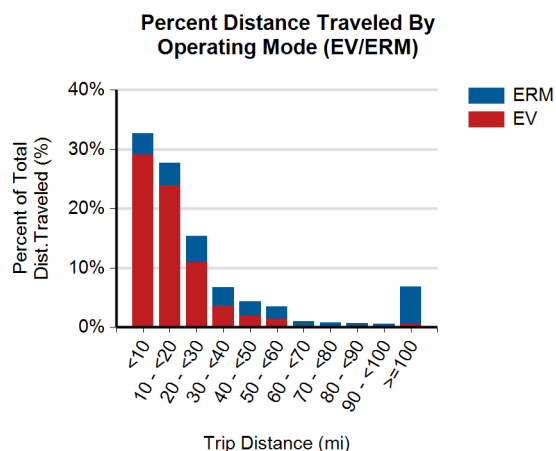
Gasoline fuel economy (mpg)	No Fuel Used
AC electrical energy consumption (AC Wh/mi)	321
Distance traveled (mi)	133,917
Percent of total distance traveled	72.1%

### Extended Range Mode (ERM) Operation

Gasoline fuel economy (mpg)	36.4
AC electrical energy consumption (AC Wh/mi)	No Elec. Used
Distance traveled (mi)	51,921
Percent of total distance traveled	27.9%

### Charging Location

	Home charging location <sup>3</sup>	Away-from-home charging locations <sup>4</sup>	Unknown charging locations <sup>5</sup>
Total number of charging events	5,792	974	286
Percent of all charging events	82%	14%	4%



1. A trip is defined as all the driving done between consecutive "key-on" and "key-off" events when some distance was traveled.

2. Averages shown in this report are based on a subset of the total miles traveled.

3. Charging events at the "home charging location" refer to charging events performed at the location where the vehicle owner's home charging unit is installed.

4. Charging events at "away-from-home charging locations" refer to charging events performed at any location other than the vehicle's "home charging location."

5. Charging events at "unknown charging locations" were performed when the vehicle's location relative to its "home charging location" is not known, due to GPS data anomalies.

## EV Project Chevrolet Volt Vehicle Summary Report

Region: Washington State

Number of vehicles: 125

Reporting period: October 2013 through December 2013

### Vehicle Usage

Overall gasoline fuel economy (mpg)	123
Overall electrical energy consumption (AC Wh/mi)	281
Number of trips <sup>1</sup>	42,315
Total distance traveled (mi)	326,565
Avg trip distance (mi) <sup>2</sup>	7.6
Avg distance traveled per day when the vehicle was driven (mi)	36.4
Avg number of trips between charging events	3.0
Avg distance traveled between charging events (mi)	23.2
Avg number of charging events per day when the vehicle was driven	1.6

### Electric Vehicle Mode (EV) Operation

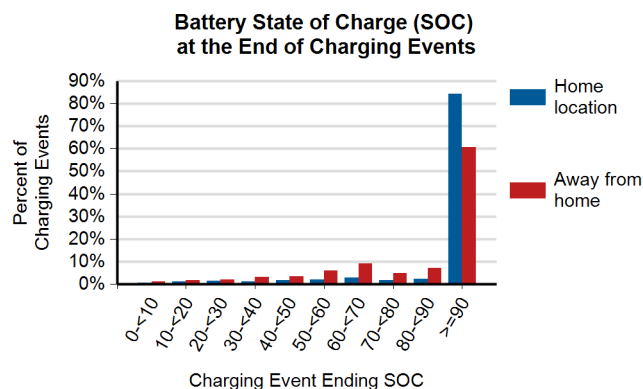
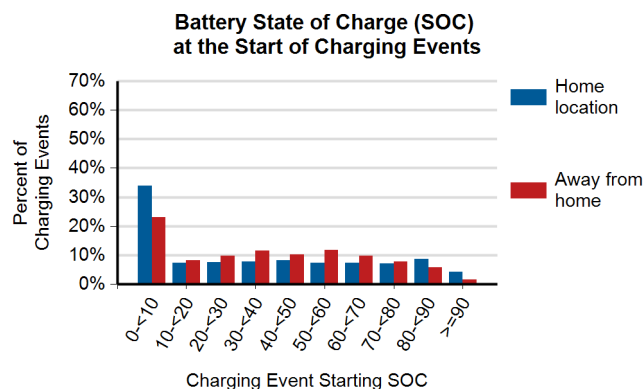
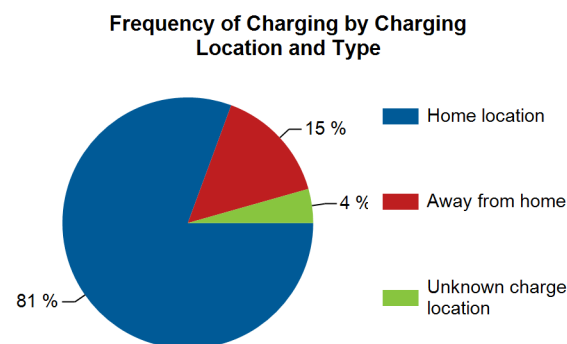
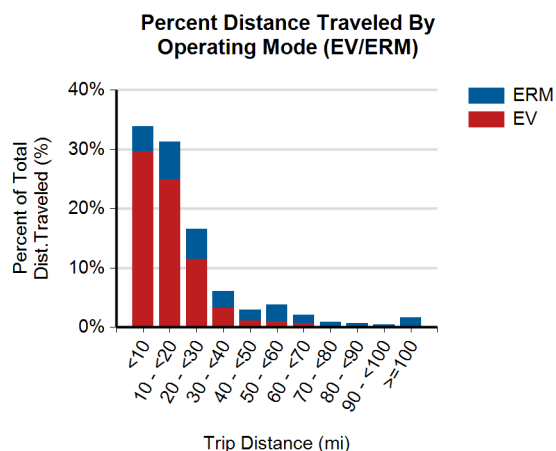
Gasoline fuel economy (mpg)	No Fuel Used
AC electrical energy consumption (AC Wh/mi)	389
Distance traveled (mi)	236,298
Percent of total distance traveled	72.4%

### Extended Range Mode (ERM) Operation

Gasoline fuel economy (mpg)	34.1
AC electrical energy consumption (AC Wh/mi)	No Elec. Used
Distance traveled (mi)	90,268
Percent of total distance traveled	27.6%

### Charging Location

	Home charging location <sup>3</sup>	Away-from-home charging locations <sup>4</sup>	Unknown charging locations <sup>5</sup>
Total number of charging events	11,197	2,081	609
Percent of all charging events	81%	15%	4%



1. A trip is defined as all the driving done between consecutive "key-on" and "key-off" events when some distance was traveled.
2. Averages shown in this report are based on a subset of the total miles traveled.
3. Charging events at the "home charging location" refer to charging events performed at the location where the vehicle owner's home charging unit is installed.
4. Charging events at "away-from-home charging locations" refer to charging events performed at any location other than the vehicle's "home charging location."
5. Charging events at "unknown charging locations" were performed when the vehicle's location relative to its "home charging location" is not known, due to GPS data anomalies.

## EV Project Chevrolet Volt Vehicle Summary Report

Region: Chicago, IL Metropolitan Area

Number of vehicles: 114

Reporting period: October 2013 through December 2013

### Vehicle Usage

Overall gasoline fuel economy (mpg)	103
Overall electrical energy consumption (AC Wh/mi)	249
Number of trips <sup>1</sup>	41,907
Total distance traveled (mi)	358,083
Avg trip distance (mi) <sup>2</sup>	8.4
Avg distance traveled per day when the vehicle was driven (mi)	41.9
Avg number of trips between charging events	3.1
Avg distance traveled between charging events (mi)	26.1
Avg number of charging events per day when the vehicle was driven	1.6

### Electric Vehicle Mode (EV) Operation

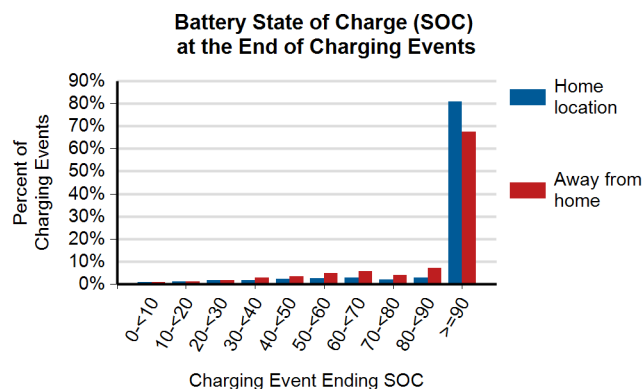
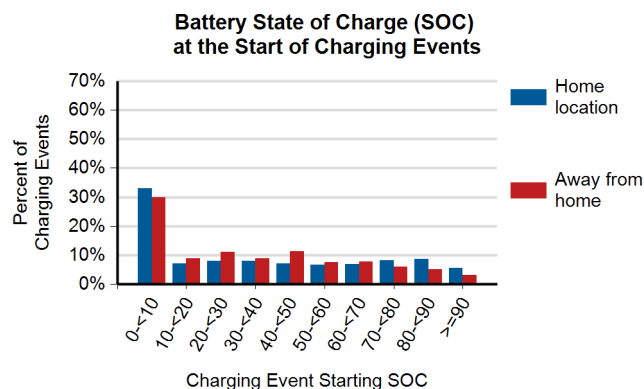
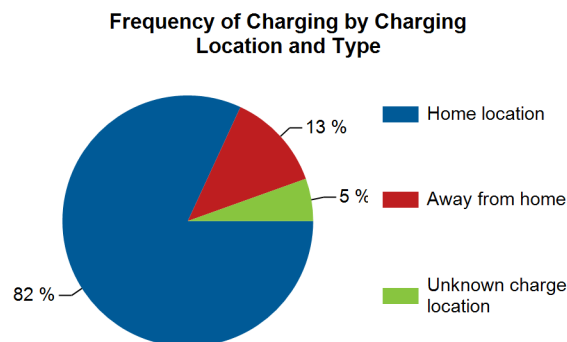
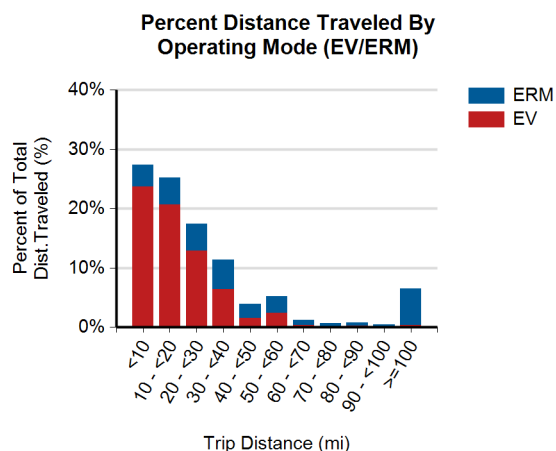
Gasoline fuel economy (mpg)	No Fuel Used
AC electrical energy consumption (AC Wh/mi)	365
Distance traveled (mi)	244,098
Percent of total distance traveled	68.2%

### Extended Range Mode (ERM) Operation

Gasoline fuel economy (mpg)	32.9
AC electrical energy consumption (AC Wh/mi)	No Elec. Used
Distance traveled (mi)	113,986
Percent of total distance traveled	31.8%

### Charging Location

	Home charging location <sup>3</sup>	Away-from-home charging locations <sup>4</sup>	Unknown charging locations <sup>5</sup>
Total number of charging events	11,084	1,710	740
Percent of all charging events	82%	13%	5%



1. A trip is defined as all the driving done between consecutive "key-on" and "key-off" events when some distance was traveled.
2. Averages shown in this report are based on a subset of the total miles traveled.
3. Charging events at the "home charging location" refer to charging events performed at the location where the vehicle owner's home charging unit is installed.
4. Charging events at "away-from-home charging locations" refer to charging events performed at any location other than the vehicle's "home charging location."
5. Charging events at "unknown charging locations" were performed when the vehicle's location relative to its "home charging location" is not known, due to GPS data anomalies.

## EV Project Chevrolet Volt Vehicle Summary Report

Region: Atlanta, GA Metropolitan Area

Number of vehicles: 56

Reporting period: October 2013 through December 2013

### Vehicle Usage

Overall gasoline fuel economy (mpg)	109
Overall electrical energy consumption (AC Wh/mi)	225
Number of trips <sup>1</sup>	19,850
Total distance traveled (mi)	184,839
Avg trip distance (mi) <sup>2</sup>	9.1
Avg distance traveled per day when the vehicle was driven (mi)	43.5
Avg number of trips between charging events	3.2
Avg distance traveled between charging events (mi)	29.4
Avg number of charging events per day when the vehicle was driven	1.5

### Electric Vehicle Mode (EV) Operation

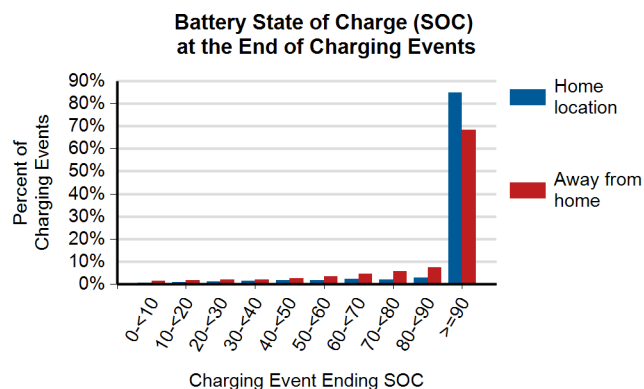
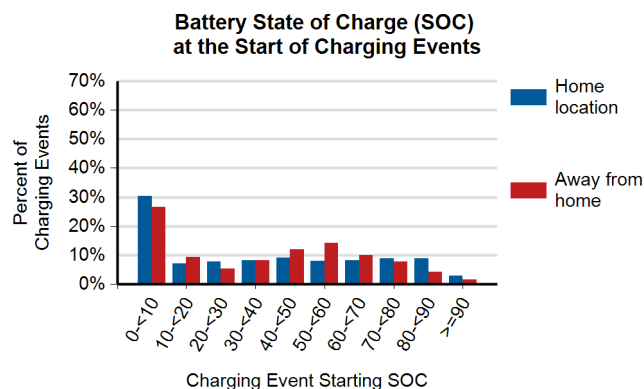
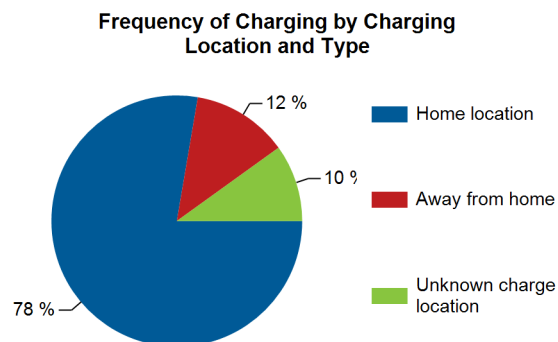
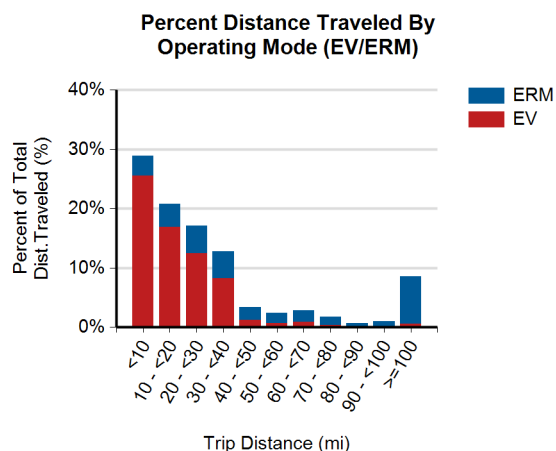
Gasoline fuel economy (mpg)	No Fuel Used
AC electrical energy consumption (AC Wh/mi)	336
Distance traveled (mi)	123,915
Percent of total distance traveled	67.0%

### Extended Range Mode (ERM) Operation

Gasoline fuel economy (mpg)	36.0
AC electrical energy consumption (AC Wh/mi)	No Elec. Used
Distance traveled (mi)	60,924
Percent of total distance traveled	33.0%

### Charging Location

	Home charging location <sup>3</sup>	Away-from-home charging locations <sup>4</sup>	Unknown charging locations <sup>5</sup>
Total number of charging events	4,773	761	610
Percent of all charging events	78%	12%	10%



1. A trip is defined as all the driving done between consecutive "key-on" and "key-off" events when some distance was traveled.

2. Averages shown in this report are based on a subset of the total miles traveled.

3. Charging events at the "home charging location" refer to charging events performed at the location where the vehicle owner's home charging unit is installed.

4. Charging events at "away-from-home charging locations" refer to charging events performed at any location other than the vehicle's "home charging location."

5. Charging events at "unknown charging locations" were performed when the vehicle's location relative to its "home charging location" is not known, due to GPS data anomalies.



## EV Project Chevrolet Volt Vehicle Summary Report

Region: Philadelphia, PA Metropolitan Area

Number of vehicles: 41

Reporting period: October 2013 through December 2013

### Vehicle Usage

Overall gasoline fuel economy (mpg)	92
Overall electrical energy consumption (AC Wh/mi)	218
Number of trips <sup>1</sup>	16,000
Total distance traveled (mi)	138,774
Avg trip distance (mi) <sup>2</sup>	8.6
Avg distance traveled per day when the vehicle was driven (mi)	45.0
Avg number of trips between charging events	3.4
Avg distance traveled between charging events (mi)	29.4
Avg number of charging events per day when the vehicle was driven	1.5

### Electric Vehicle Mode (EV) Operation

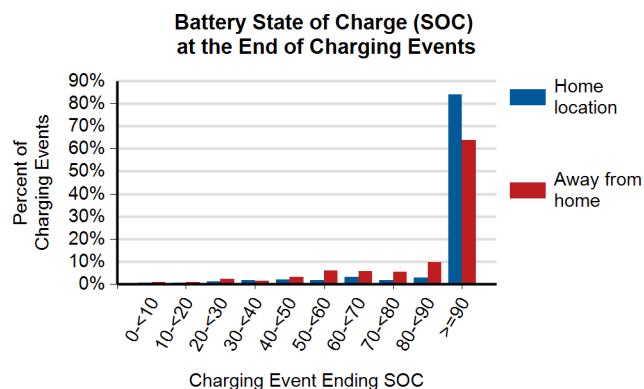
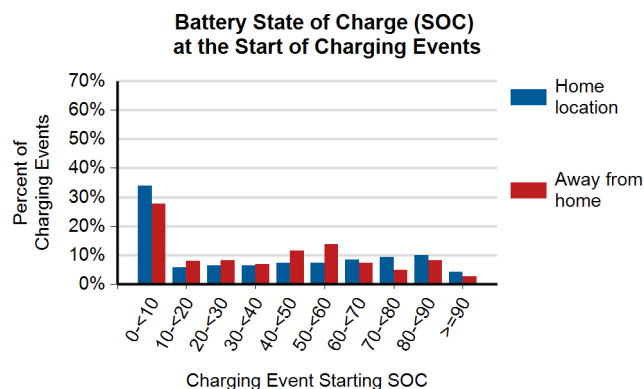
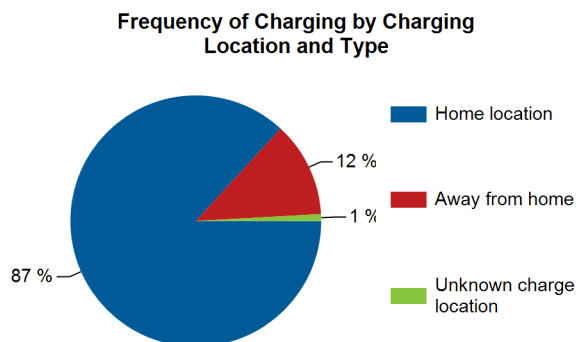
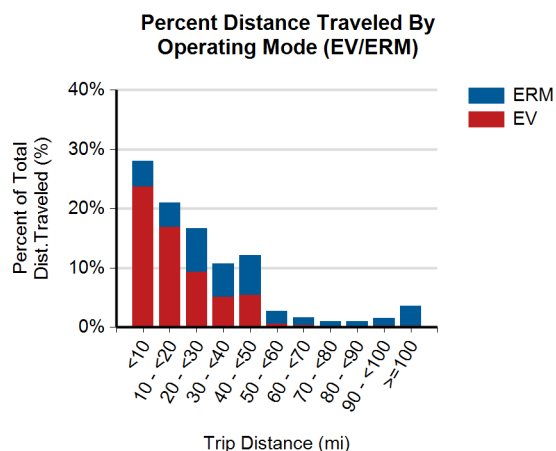
Gasoline fuel economy (mpg)	No Fuel Used
AC electrical energy consumption (AC Wh/mi)	353
Distance traveled (mi)	85,798
Percent of total distance traveled	61.8%

### Extended Range Mode (ERM) Operation

Gasoline fuel economy (mpg)	35.0
AC electrical energy consumption (AC Wh/mi)	No Elec. Used
Distance traveled (mi)	52,976
Percent of total distance traveled	38.2%

### Charging Location

	Home charging location <sup>3</sup>	Away-from-home charging locations <sup>4</sup>	Unknown charging locations <sup>5</sup>
Total number of charging events	4,074	576	42
Percent of all charging events	87%	12%	1%



1. A trip is defined as all the driving done between consecutive "key-on" and "key-off" events when some distance was traveled.
2. Averages shown in this report are based on a subset of the total miles traveled.
3. Charging events at the "home charging location" refer to charging events performed at the location where the vehicle owner's home charging unit is installed.
4. Charging events at "away-from-home charging locations" refer to charging events performed at any location other than the vehicle's "home charging location."
5. Charging events at "unknown charging locations" were performed when the vehicle's location relative to its "home charging location" is not known, due to GPS data anomalies.