

## EV Project Chevrolet Volt Vehicle Summary Report

Region: ALL

Number of vehicles: 1812

Reporting period: July 2013 through September 2013

### Vehicle Usage

Overall gasoline fuel economy (mpg)	134
Overall electrical energy consumption (AC Wh/mi)	229
Number of trips <sup>1</sup>	638,434
Total distance traveled (mi)	5,447,766
Avg trip distance (mi) <sup>2</sup>	8.4
Avg distance traveled per day when the vehicle was driven (mi)	41.1
Avg number of trips between charging events	3.3
Avg distance traveled between charging events (mi)	28.1
Avg number of charging events per day when the vehicle was driven	1.5

### Electric Vehicle Mode (EV) Operation

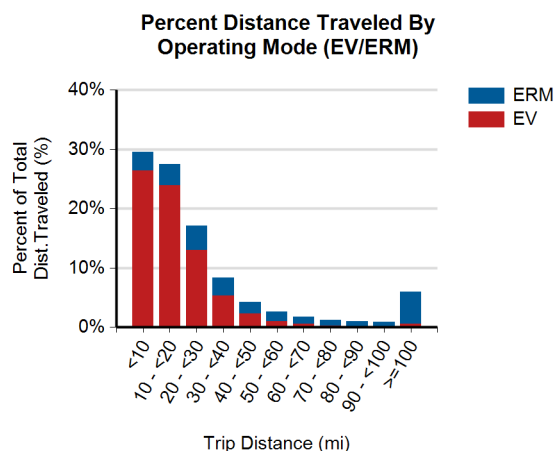
Gasoline fuel economy (mpg)	No Fuel Used
AC electrical energy consumption (AC Wh/mi)	312
Distance traveled (mi)	4,000,514
Percent of total distance traveled	73.4%

### Extended Range Mode (ERM) Operation

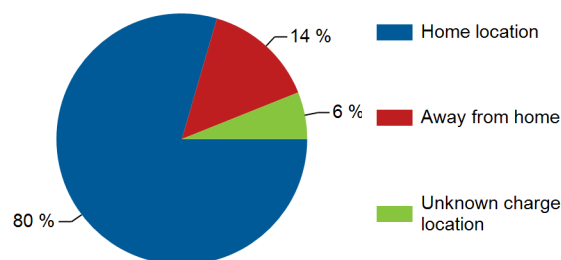
Gasoline fuel economy (mpg)	35.6
AC electrical energy consumption (AC Wh/mi)	No Elec. Used
Distance traveled (mi)	1,447,252
Percent of total distance traveled	26.6%

### Charging Location

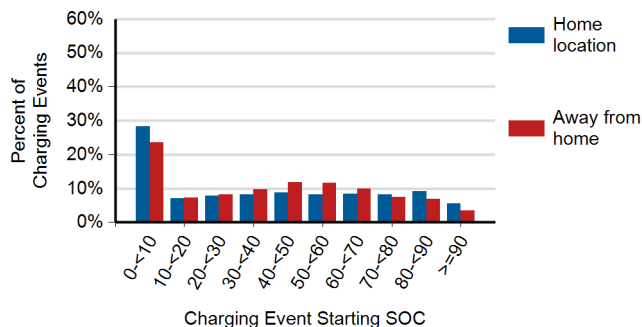
	Home charging location <sup>3</sup>	Away-from-home charging locations <sup>4</sup>	Unknown charging locations <sup>5</sup>
Total number of charging events	152,084	27,597	11,579
Percent of all charging events	80%	14%	6%



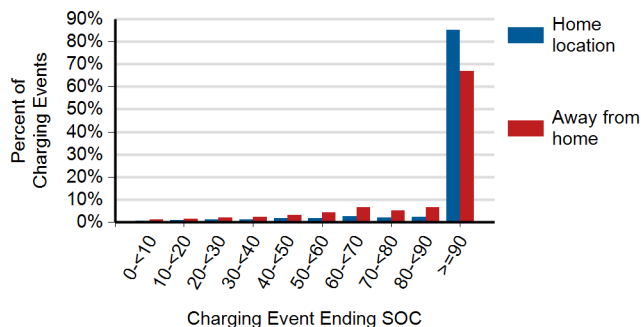
### Frequency of Charging by Charging Location and Type



### Battery State of Charge (SOC) at the Start of Charging Events



### Battery State of Charge (SOC) at the End of Charging Events



1. A trip is defined as all the driving done between consecutive "key-on" and "key-off" events when some distance was traveled.

2. Averages shown in this report are based on a subset of the total miles traveled.

3. Charging events at the "home charging location" refer to charging events performed at the location where the vehicle owner's home charging unit is installed.

4. Charging events at "away-from-home charging locations" refer to charging events performed at any location other than the vehicle's "home charging location."

5. Charging events at "unknown charging locations" were performed when the vehicle's location relative to its "home charging location" is not known, due to GPS data anomalies.

## EV Project Chevrolet Volt Vehicle Summary Report

Region: Phoenix, AZ Metropolitan Area

Number of vehicles: 120

Reporting period: July 2013 through September 2013

### Vehicle Usage

Overall gasoline fuel economy (mpg)	124
Overall electrical energy consumption (AC Wh/mi)	260
Number of trips <sup>1</sup>	44,035
Total distance traveled (mi)	372,629
Avg trip distance (mi) <sup>2</sup>	8.4
Avg distance traveled per day when the vehicle was driven (mi)	41.2
Avg number of trips between charging events	3.4
Avg distance traveled between charging events (mi)	28.2
Avg number of charging events per day when the vehicle was driven	1.5

### Electric Vehicle Mode (EV) Operation

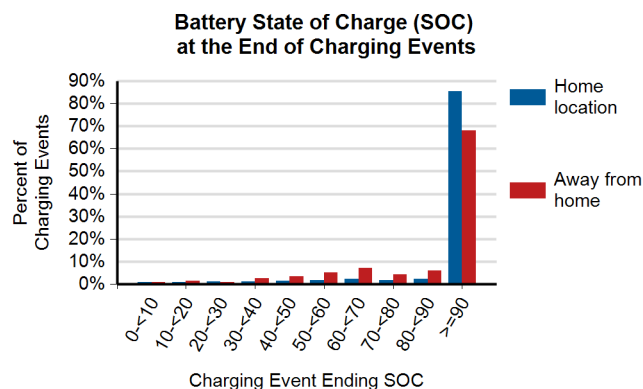
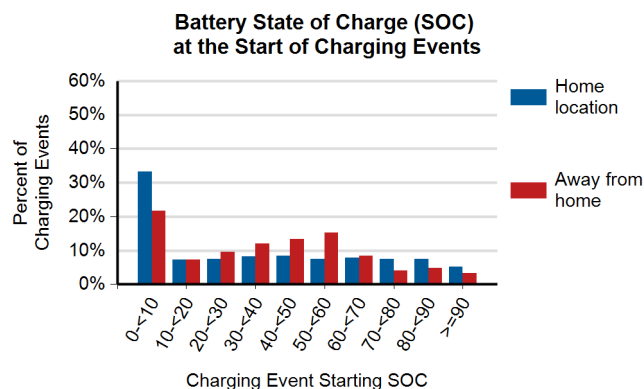
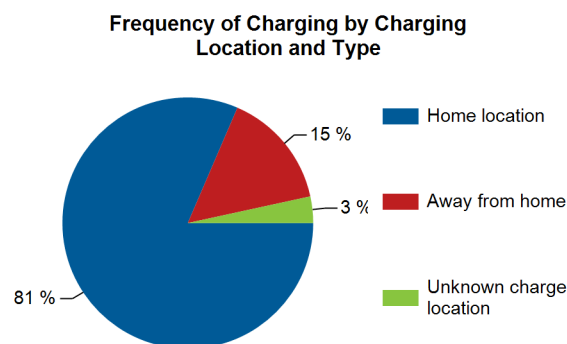
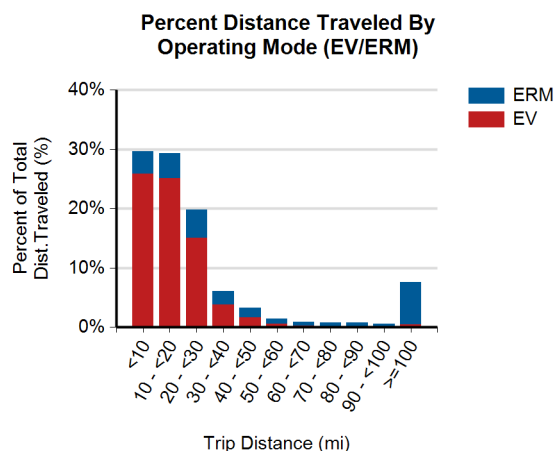
Gasoline fuel economy (mpg)	No Fuel Used
AC electrical energy consumption (AC Wh/mi)	357
Distance traveled (mi)	271,551
Percent of total distance traveled	72.9%

### Extended Range Mode (ERM) Operation

Gasoline fuel economy (mpg)	33.7
AC electrical energy consumption (AC Wh/mi)	No Elec. Used
Distance traveled (mi)	101,078
Percent of total distance traveled	27.1%

### Charging Location

	Home charging location <sup>3</sup>	Away-from-home charging locations <sup>4</sup>	Unknown charging locations <sup>5</sup>
Total number of charging events	10,659	1,977	446
Percent of all charging events	81%	15%	3%



1. A trip is defined as all the driving done between consecutive "key-on" and "key-off" events when some distance was traveled.

2. Averages shown in this report are based on a subset of the total miles traveled.

3. Charging events at the "home charging location" refer to charging events performed at the location where the vehicle owner's home charging unit is installed.

4. Charging events at "away-from-home charging locations" refer to charging events performed at any location other than the vehicle's "home charging location."

5. Charging events at "unknown charging locations" were performed when the vehicle's location relative to its "home charging location" is not known, due to GPS data anomalies.

## EV Project Chevrolet Volt Vehicle Summary Report

Region: Los Angeles, CA Metropolitan Area

Number of vehicles: 313

Reporting period: July 2013 through September 2013

### Vehicle Usage

Overall gasoline fuel economy (mpg)	130
Overall electrical energy consumption (AC Wh/mi)	236
Number of trips <sup>1</sup>	111,762
Total distance traveled (mi)	867,917
Avg trip distance (mi) <sup>2</sup>	7.6
Avg distance traveled per day when the vehicle was driven (mi)	38.2
Avg number of trips between charging events	3.7
Avg distance traveled between charging events (mi)	28.6
Avg number of charging events per day when the vehicle was driven	1.3

### Electric Vehicle Mode (EV) Operation

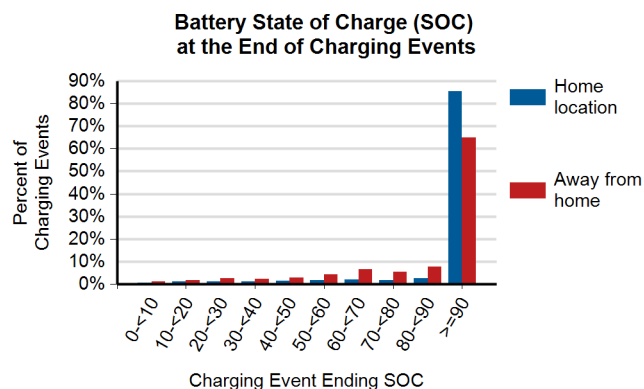
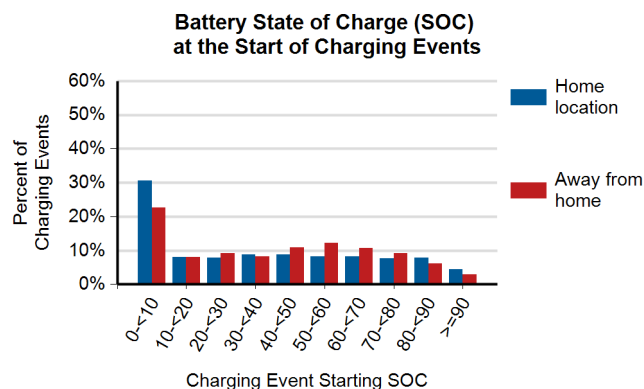
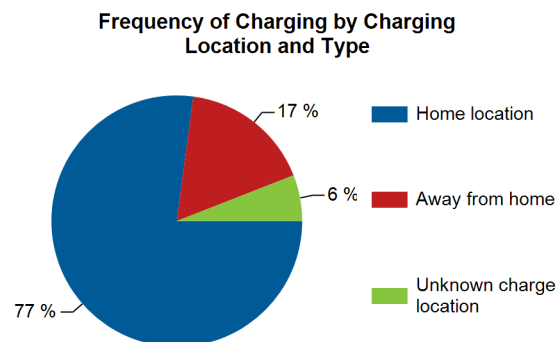
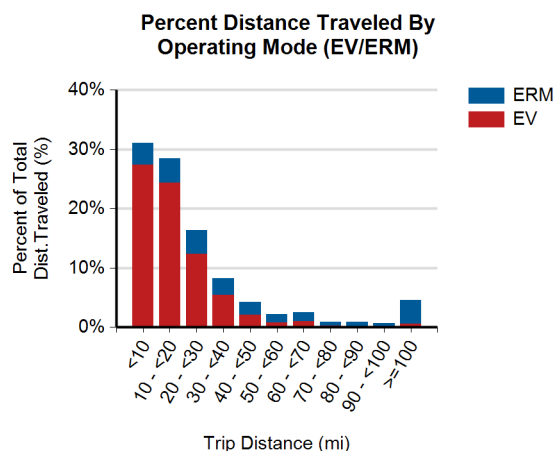
Gasoline fuel economy (mpg)	No Fuel Used
AC electrical energy consumption (AC Wh/mi)	317
Distance traveled (mi)	645,212
Percent of total distance traveled	74.3%

### Extended Range Mode (ERM) Operation

Gasoline fuel economy (mpg)	33.3
AC electrical energy consumption (AC Wh/mi)	No Elec. Used
Distance traveled (mi)	222,705
Percent of total distance traveled	25.7%

### Charging Location

	Home charging location <sup>3</sup>	Away-from-home charging locations <sup>4</sup>	Unknown charging locations <sup>5</sup>
Total number of charging events	22,981	5,057	1,770
Percent of all charging events	77%	17%	6%



1. A trip is defined as all the driving done between consecutive "key-on" and "key-off" events when some distance was traveled.
2. Averages shown in this report are based on a subset of the total miles traveled.
3. Charging events at the "home charging location" refer to charging events performed at the location where the vehicle owner's home charging unit is installed.
4. Charging events at "away-from-home charging locations" refer to charging events performed at any location other than the vehicle's "home charging location."
5. Charging events at "unknown charging locations" were performed when the vehicle's location relative to its "home charging location" is not known, due to GPS data anomalies.

# EV Project Chevrolet Volt Vehicle Summary Report

Region: San Diego, CA Metropolitan Area

Number of vehicles: 242

Reporting period: July 2013 through September 2013

## Vehicle Usage

Overall gasoline fuel economy (mpg)	121
Overall electrical energy consumption (AC Wh/mi)	229
Number of trips <sup>1</sup>	82,040
Total distance traveled (mi)	701,806
Avg trip distance (mi) <sup>2</sup>	8.4
Avg distance traveled per day when the vehicle was driven (mi)	40.6
Avg number of trips between charging events	3.6
Avg distance traveled between charging events (mi)	30.4
Avg number of charging events per day when the vehicle was driven	1.3

## Electric Vehicle Mode (EV) Operation

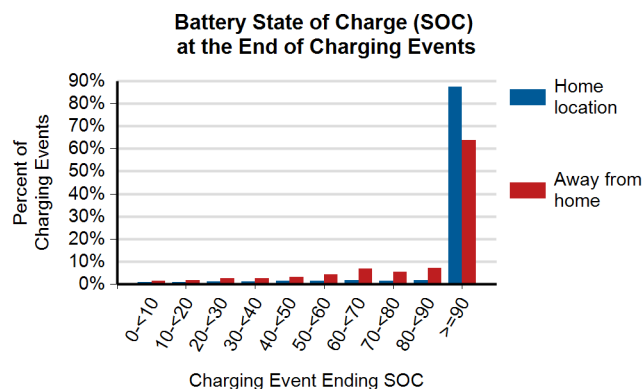
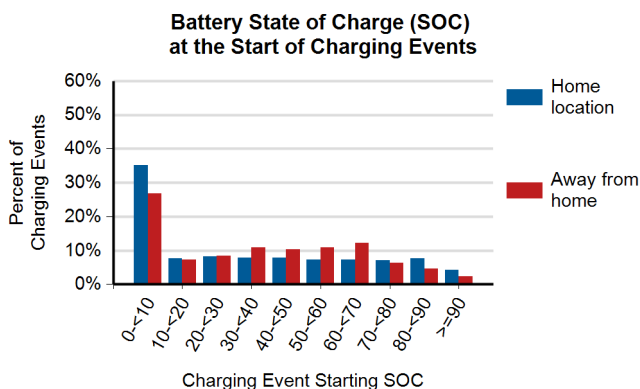
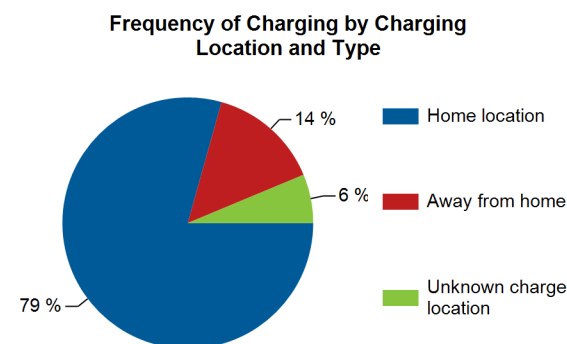
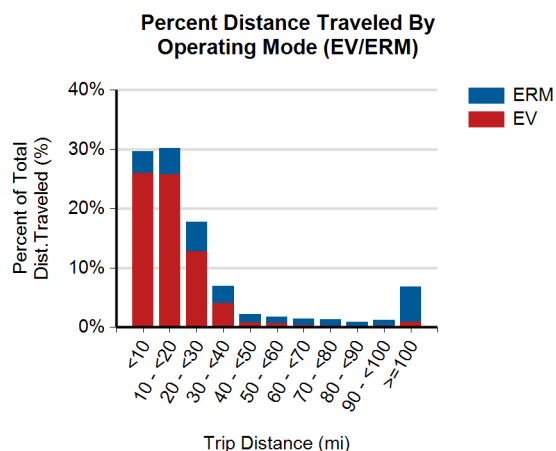
Gasoline fuel economy (mpg)	No Fuel Used
AC electrical energy consumption (AC Wh/mi)	319
Distance traveled (mi)	503,403
Percent of total distance traveled	71.7%

## Extended Range Mode (ERM) Operation

Gasoline fuel economy (mpg)	34.3
AC electrical energy consumption (AC Wh/mi)	No Elec. Used
Distance traveled (mi)	198,403
Percent of total distance traveled	28.3%

## Charging Location

	Home charging location <sup>3</sup>	Away-from-home charging locations <sup>4</sup>	Unknown charging locations <sup>5</sup>
Total number of charging events	17,954	3,255	1,421
Percent of all charging events	79%	14%	6%



1. A trip is defined as all the driving done between consecutive "key-on" and "key-off" events when some distance was traveled.
2. Averages shown in this report are based on a subset of the total miles traveled.
3. Charging events at the "home charging location" refer to charging events performed at the location where the vehicle owner's home charging unit is installed.
4. Charging events at "away-from-home charging locations" refer to charging events performed at any location other than the vehicle's "home charging location."
5. Charging events at "unknown charging locations" were performed when the vehicle's location relative to its "home charging location" is not known, due to GPS data anomalies.

## EV Project Chevrolet Volt Vehicle Summary Report

Region: Washington, D.C. Metropolitan Area

Number of vehicles: 254

Reporting period: July 2013 through September 2013

### Vehicle Usage

Overall gasoline fuel economy (mpg)	147
Overall electrical energy consumption (AC Wh/mi)	219
Number of trips <sup>1</sup>	82,592
Total distance traveled (mi)	780,479
Avg trip distance (mi) <sup>2</sup>	9.3
Avg distance traveled per day when the vehicle was driven (mi)	42.5
Avg number of trips between charging events	3.1
Avg distance traveled between charging events (mi)	28.7
Avg number of charging events per day when the vehicle was driven	1.5

### Electric Vehicle Mode (EV) Operation

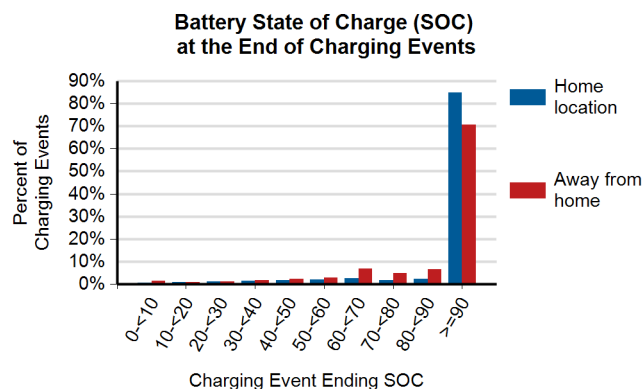
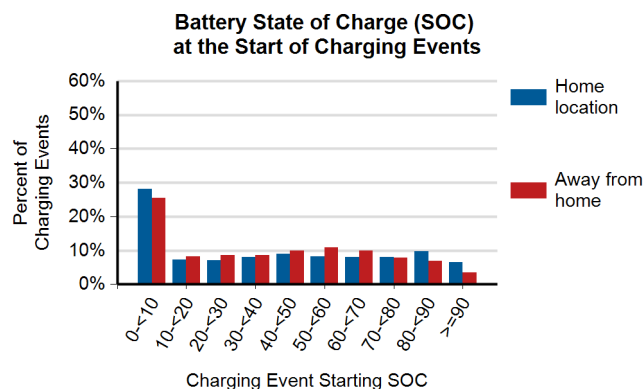
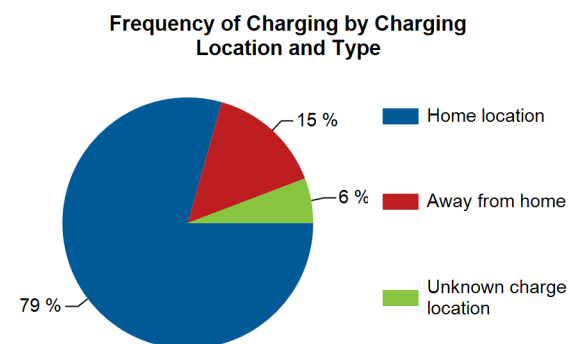
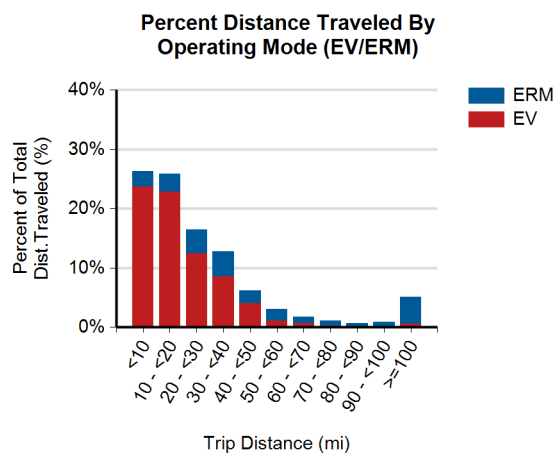
Gasoline fuel economy (mpg)	No Fuel Used
AC electrical energy consumption (AC Wh/mi)	295
Distance traveled (mi)	578,991
Percent of total distance traveled	74.2%

### Extended Range Mode (ERM) Operation

Gasoline fuel economy (mpg)	37.8
AC electrical energy consumption (AC Wh/mi)	No Elec. Used
Distance traveled (mi)	201,489
Percent of total distance traveled	25.8%

### Charging Location

	Home charging location <sup>3</sup>	Away-from-home charging locations <sup>4</sup>	Unknown charging locations <sup>5</sup>
Total number of charging events	21,363	3,999	1,554
Percent of all charging events	79%	15%	6%



1. A trip is defined as all the driving done between consecutive "key-on" and "key-off" events when some distance was traveled.

2. Averages shown in this report are based on a subset of the total miles traveled.

3. Charging events at the "home charging location" refer to charging events performed at the location where the vehicle owner's home charging unit is installed.

4. Charging events at "away-from-home charging locations" refer to charging events performed at any location other than the vehicle's "home charging location."

5. Charging events at "unknown charging locations" were performed when the vehicle's location relative to its "home charging location" is not known, due to GPS data anomalies.

## EV Project Chevrolet Volt Vehicle Summary Report

Region: Oregon

Number of vehicles: 123

Reporting period: July 2013 through September 2013

### Vehicle Usage

Overall gasoline fuel economy (mpg)	157
Overall electrical energy consumption (AC Wh/mi)	226
Number of trips <sup>1</sup>	43,283
Total distance traveled (mi)	342,766
Avg trip distance (mi) <sup>2</sup>	7.9
Avg distance traveled per day when the vehicle was driven (mi)	39.5
Avg number of trips between charging events	3.3
Avg distance traveled between charging events (mi)	25.8
Avg number of charging events per day when the vehicle was driven	1.5

### Electric Vehicle Mode (EV) Operation

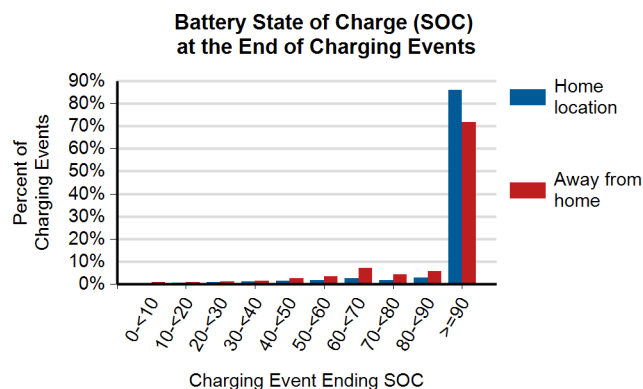
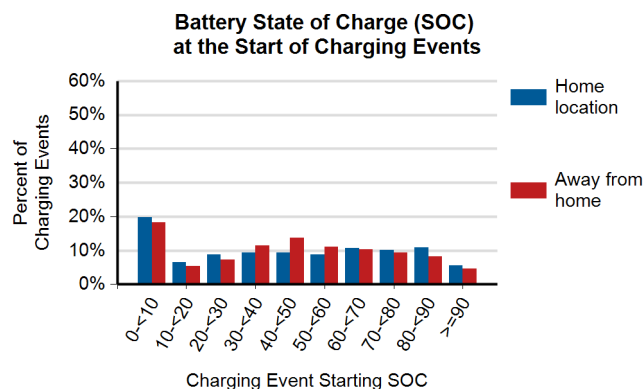
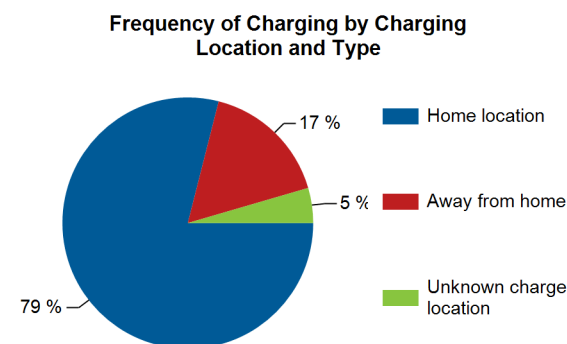
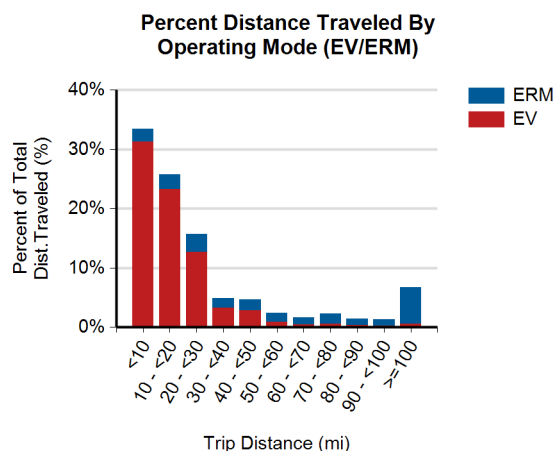
Gasoline fuel economy (mpg)	No Fuel Used
AC electrical energy consumption (AC Wh/mi)	298
Distance traveled (mi)	260,491
Percent of total distance traveled	76.0%

### Extended Range Mode (ERM) Operation

Gasoline fuel economy (mpg)	37.7
AC electrical energy consumption (AC Wh/mi)	No Elec. Used
Distance traveled (mi)	82,275
Percent of total distance traveled	24.0%

### Charging Location

	Home charging location <sup>3</sup>	Away-from-home charging locations <sup>4</sup>	Unknown charging locations <sup>5</sup>
Total number of charging events	10,420	2,181	595
Percent of all charging events	79%	17%	5%



1. A trip is defined as all the driving done between consecutive "key-on" and "key-off" events when some distance was traveled.

2. Averages shown in this report are based on a subset of the total miles traveled.

3. Charging events at the "home charging location" refer to charging events performed at the location where the vehicle owner's home charging unit is installed.

4. Charging events at "away-from-home charging locations" refer to charging events performed at any location other than the vehicle's "home charging location."

5. Charging events at "unknown charging locations" were performed when the vehicle's location relative to its "home charging location" is not known, due to GPS data anomalies.



## EV Project Chevrolet Volt Vehicle Summary Report

Region: Chattanooga, TN Metropolitan Area

Number of vehicles: 11

Reporting period: July 2013 through September 2013

### Vehicle Usage

Overall gasoline fuel economy (mpg)	83
Overall electrical energy consumption (AC Wh/mi)	156
Number of trips <sup>1</sup>	3,851
Total distance traveled (mi)	47,498
Avg trip distance (mi) <sup>2</sup>	12.3
Avg distance traveled per day when the vehicle was driven (mi)	58.6
Avg number of trips between charging events	3.5
Avg distance traveled between charging events (mi)	42.6
Avg number of charging events per day when the vehicle was driven	1.4

### Electric Vehicle Mode (EV) Operation

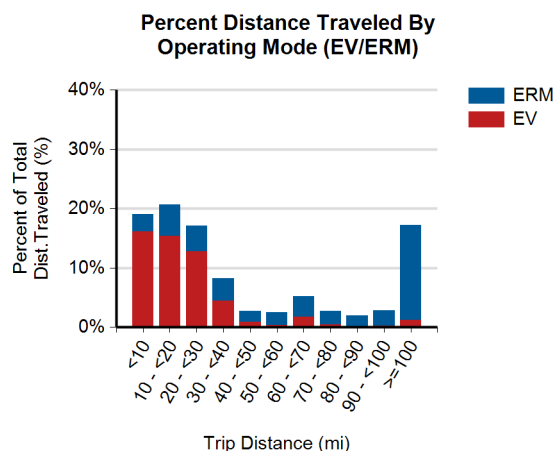
Gasoline fuel economy (mpg)	No Fuel Used
AC electrical energy consumption (AC Wh/mi)	291
Distance traveled (mi)	25,503
Percent of total distance traveled	53.7%

### Extended Range Mode (ERM) Operation

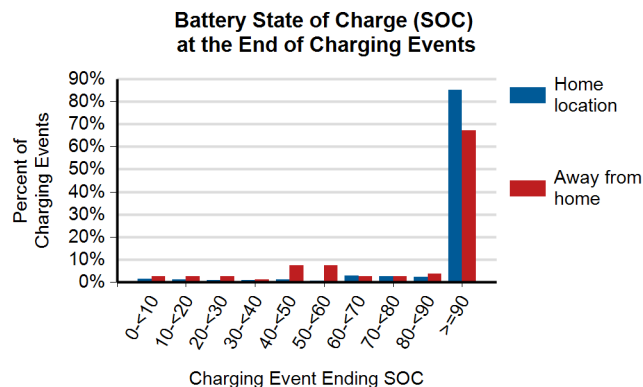
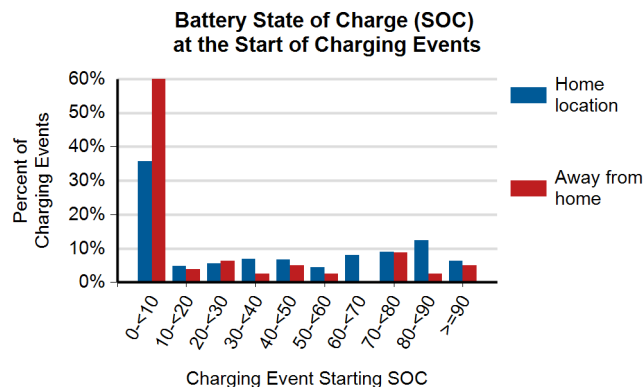
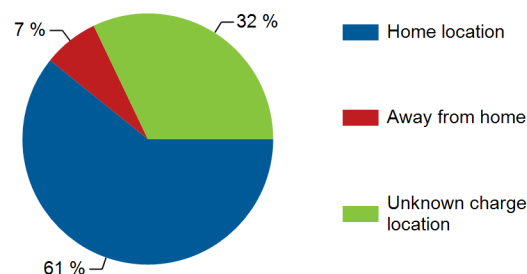
Gasoline fuel economy (mpg)	38.3
AC electrical energy consumption (AC Wh/mi)	No Elec. Used
Distance traveled (mi)	21,994
Percent of total distance traveled	46.3%

### Charging Location

	Home charging location <sup>3</sup>	Away-from-home charging locations <sup>4</sup>	Unknown charging locations <sup>5</sup>
Total number of charging events	674	79	356
Percent of all charging events	61%	7%	32%



### Frequency of Charging by Charging Location and Type



1. A trip is defined as all the driving done between consecutive "key-on" and "key-off" events when some distance was traveled.

2. Averages shown in this report are based on a subset of the total miles traveled.

3. Charging events at the "home charging location" refer to charging events performed at the location where the vehicle owner's home charging unit is installed.

4. Charging events at "away-from-home charging locations" refer to charging events performed at any location other than the vehicle's "home charging location."

5. Charging events at "unknown charging locations" were performed when the vehicle's location relative to its "home charging location" is not known, due to GPS data anomalies.

## EV Project Chevrolet Volt Vehicle Summary Report

Region: Knoxville, TN Metropolitan Area

Number of vehicles: 29

Reporting period: July 2013 through September 2013

### Vehicle Usage

Overall gasoline fuel economy (mpg)	154
Overall electrical energy consumption (AC Wh/mi)	227
Number of trips <sup>1</sup>	10,254
Total distance traveled (mi)	87,195
Avg trip distance (mi) <sup>2</sup>	8.4
Avg distance traveled per day when the vehicle was driven (mi)	43.0
Avg number of trips between charging events	3.2
Avg distance traveled between charging events (mi)	27.2
Avg number of charging events per day when the vehicle was driven	1.6

### Electric Vehicle Mode (EV) Operation

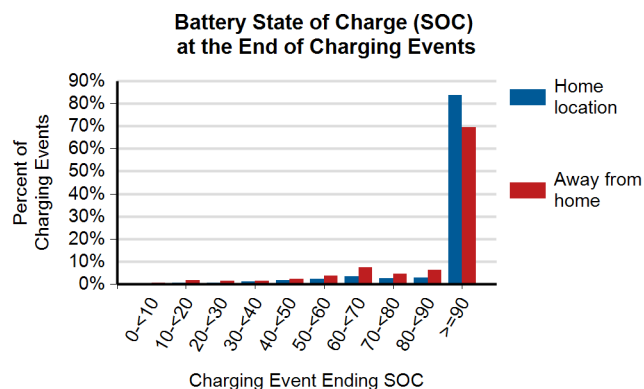
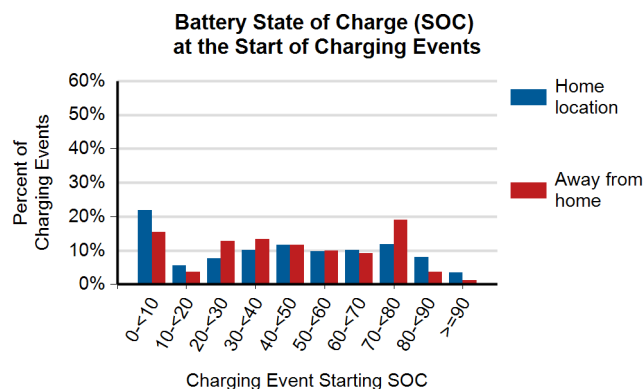
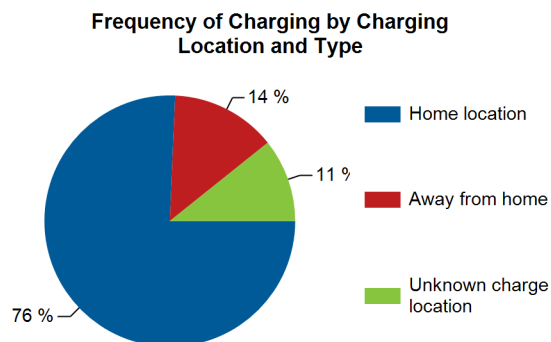
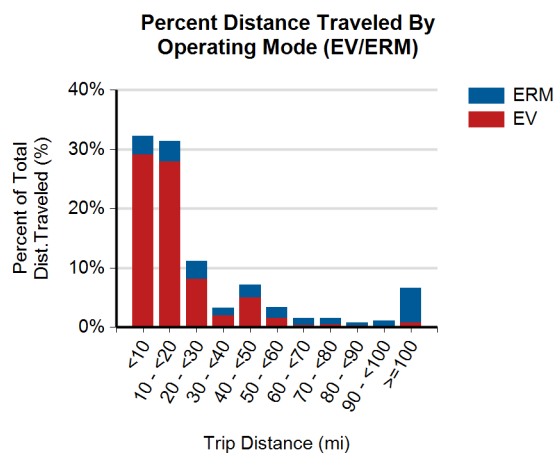
Gasoline fuel economy (mpg)	No Fuel Used
AC electrical energy consumption (AC Wh/mi)	302
Distance traveled (mi)	65,598
Percent of total distance traveled	75.2%

### Extended Range Mode (ERM) Operation

Gasoline fuel economy (mpg)	38.2
AC electrical energy consumption (AC Wh/mi)	No Elec. Used
Distance traveled (mi)	21,596
Percent of total distance traveled	24.8%

### Charging Location

	Home charging location <sup>3</sup>	Away-from-home charging locations <sup>4</sup>	Unknown charging locations <sup>5</sup>
Total number of charging events	2,406	432	341
Percent of all charging events	76%	14%	11%



1. A trip is defined as all the driving done between consecutive "key-on" and "key-off" events when some distance was traveled.
2. Averages shown in this report are based on a subset of the total miles traveled.
3. Charging events at the "home charging location" refer to charging events performed at the location where the vehicle owner's home charging unit is installed.
4. Charging events at "away-from-home charging locations" refer to charging events performed at any location other than the vehicle's "home charging location."
5. Charging events at "unknown charging locations" were performed when the vehicle's location relative to its "home charging location" is not known, due to GPS data anomalies.



## EV Project Chevrolet Volt Vehicle Summary Report

Region: Memphis, TN Metropolitan Area

Number of vehicles: 29

Reporting period: July 2013 through September 2013

### Vehicle Usage

Overall gasoline fuel economy (mpg)	117
Overall electrical energy consumption (AC Wh/mi)	211
Number of trips <sup>1</sup>	10,633
Total distance traveled (mi)	85,889
Avg trip distance (mi) <sup>2</sup>	8.0
Avg distance traveled per day when the vehicle was driven (mi)	42.5
Avg number of trips between charging events	3.5
Avg distance traveled between charging events (mi)	28.2
Avg number of charging events per day when the vehicle was driven	1.5

### Electric Vehicle Mode (EV) Operation

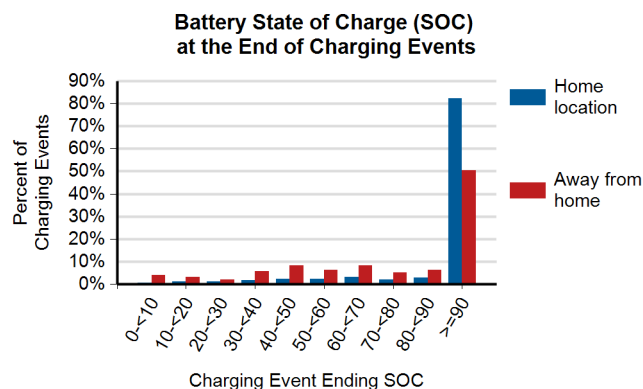
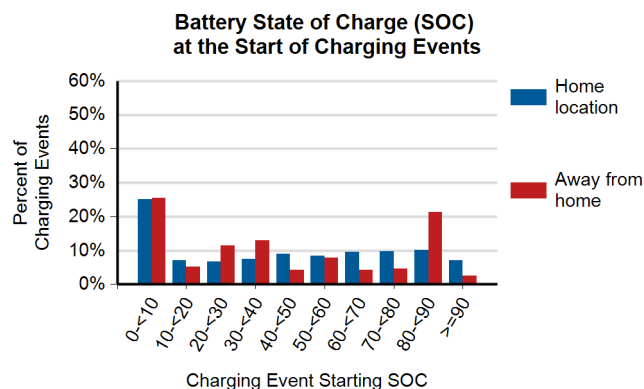
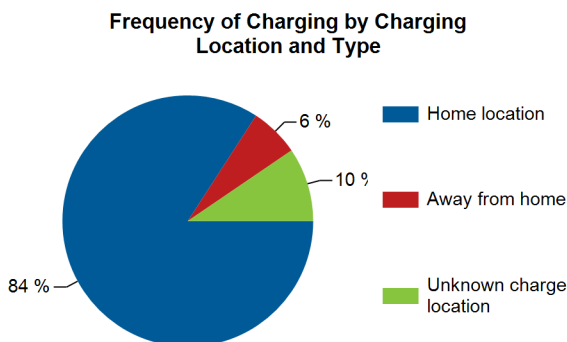
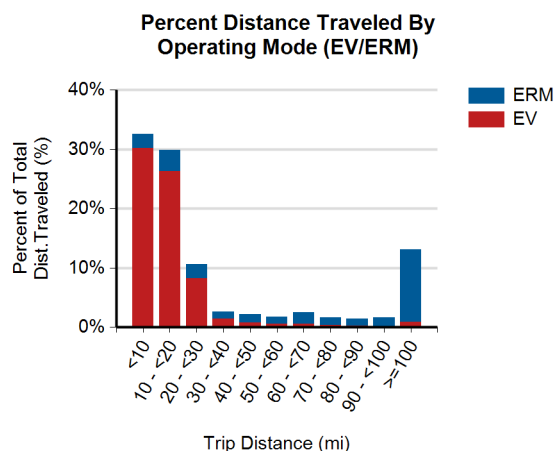
Gasoline fuel economy (mpg)	No Fuel Used
AC electrical energy consumption (AC Wh/mi)	304
Distance traveled (mi)	59,494
Percent of total distance traveled	69.3%

### Extended Range Mode (ERM) Operation

Gasoline fuel economy (mpg)	36.0
AC electrical energy consumption (AC Wh/mi)	No Elec. Used
Distance traveled (mi)	26,395
Percent of total distance traveled	30.7%

### Charging Location

	Home charging location <sup>3</sup>	Away-from-home charging locations <sup>4</sup>	Unknown charging locations <sup>5</sup>
Total number of charging events	2,549	192	288
Percent of all charging events	84%	6%	10%



1. A trip is defined as all the driving done between consecutive "key-on" and "key-off" events when some distance was traveled.

2. Averages shown in this report are based on a subset of the total miles traveled.

3. Charging events at the "home charging location" refer to charging events performed at the location where the vehicle owner's home charging unit is installed.

4. Charging events at "away-from-home charging locations" refer to charging events performed at any location other than the vehicle's "home charging location."

5. Charging events at "unknown charging locations" were performed when the vehicle's location relative to its "home charging location" is not known, due to GPS data anomalies.

## EV Project Chevrolet Volt Vehicle Summary Report

Region: Nashville, TN Metropolitan Area

Number of vehicles: 47

Reporting period: July 2013 through September 2013

### Vehicle Usage

Overall gasoline fuel economy (mpg)	148
Overall electrical energy consumption (AC Wh/mi)	224
Number of trips <sup>1</sup>	16,719
Total distance traveled (mi)	146,879
Avg trip distance (mi) <sup>2</sup>	8.7
Avg distance traveled per day when the vehicle was driven (mi)	42.6
Avg number of trips between charging events	3.2
Avg distance traveled between charging events (mi)	28.2
Avg number of charging events per day when the vehicle was driven	1.5

### Electric Vehicle Mode (EV) Operation

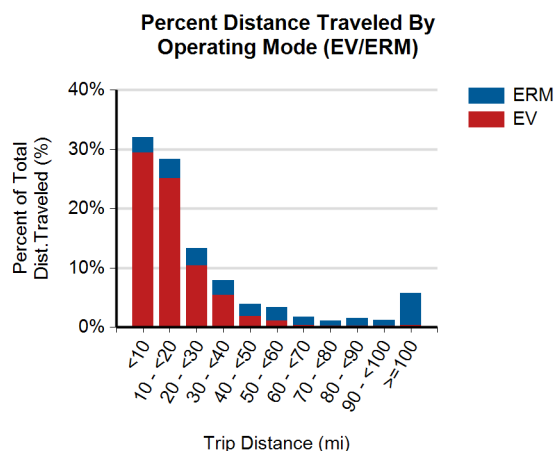
Gasoline fuel economy (mpg)	No Fuel Used
AC electrical energy consumption (AC Wh/mi)	299
Distance traveled (mi)	109,703
Percent of total distance traveled	74.7%

### Extended Range Mode (ERM) Operation

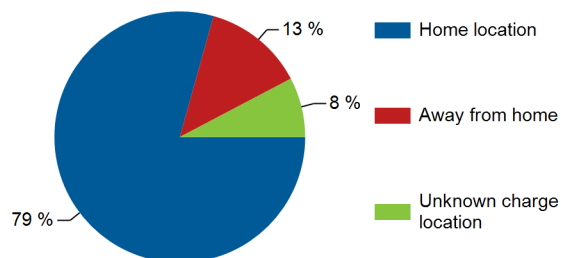
Gasoline fuel economy (mpg)	37.4
AC electrical energy consumption (AC Wh/mi)	No Elec. Used
Distance traveled (mi)	37,176
Percent of total distance traveled	25.3%

### Charging Location

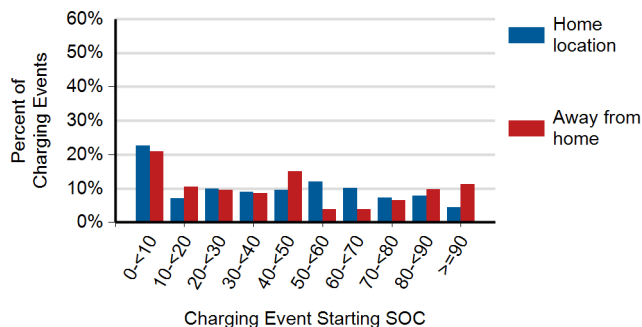
	Home charging location <sup>3</sup>	Away-from-home charging locations <sup>4</sup>	Unknown charging locations <sup>5</sup>
Total number of charging events	4,092	669	397
Percent of all charging events	79%	13%	8%



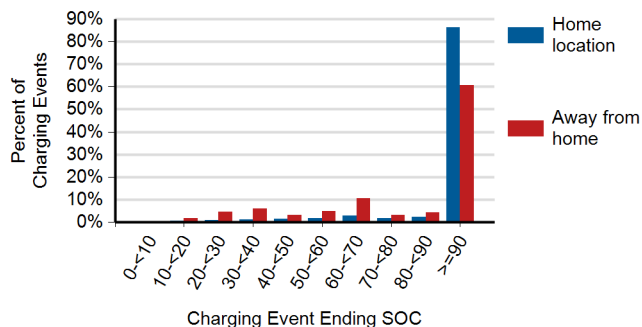
### Frequency of Charging by Charging Location and Type



### Battery State of Charge (SOC) at the Start of Charging Events



### Battery State of Charge (SOC) at the End of Charging Events



1. A trip is defined as all the driving done between consecutive "key-on" and "key-off" events when some distance was traveled.

2. Averages shown in this report are based on a subset of the total miles traveled.

3. Charging events at the "home charging location" refer to charging events performed at the location where the vehicle owner's home charging unit is installed.

4. Charging events at "away-from-home charging locations" refer to charging events performed at any location other than the vehicle's "home charging location."

5. Charging events at "unknown charging locations" were performed when the vehicle's location relative to its "home charging location" is not known, due to GPS data anomalies.

## EV Project Chevrolet Volt Vehicle Summary Report

Region: Dallas/Ft. Worth, TX Metropolitan Area

Number of vehicles: 168

Reporting period: July 2013 through September 2013

### Vehicle Usage

Overall gasoline fuel economy (mpg)	135
Overall electrical energy consumption (AC Wh/mi)	252
Number of trips <sup>1</sup>	59,965
Total distance traveled (mi)	516,455
Avg trip distance (mi) <sup>2</sup>	8.5
Avg distance traveled per day when the vehicle was driven (mi)	40.7
Avg number of trips between charging events	3.0
Avg distance traveled between charging events (mi)	25.8
Avg number of charging events per day when the vehicle was driven	1.6

### Electric Vehicle Mode (EV) Operation

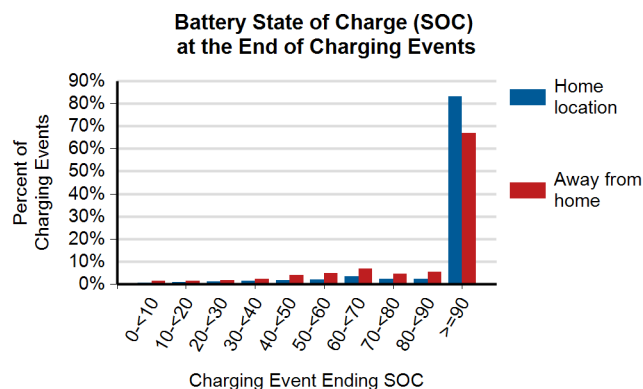
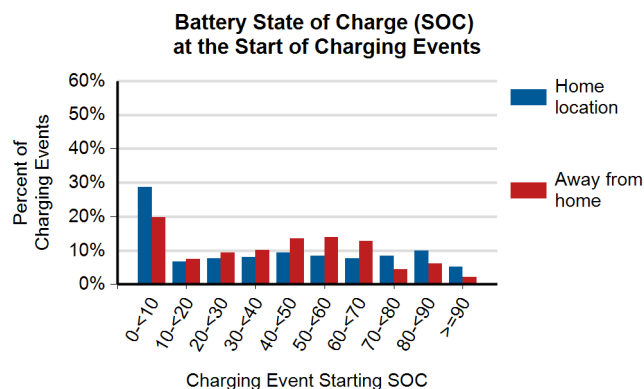
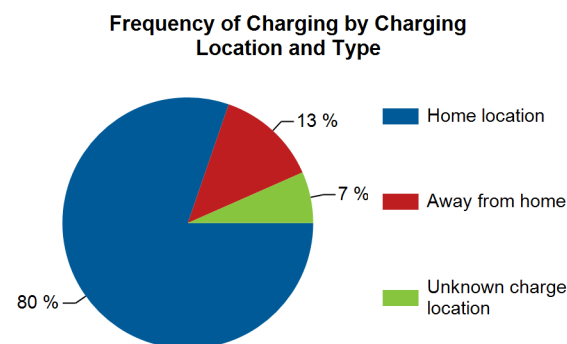
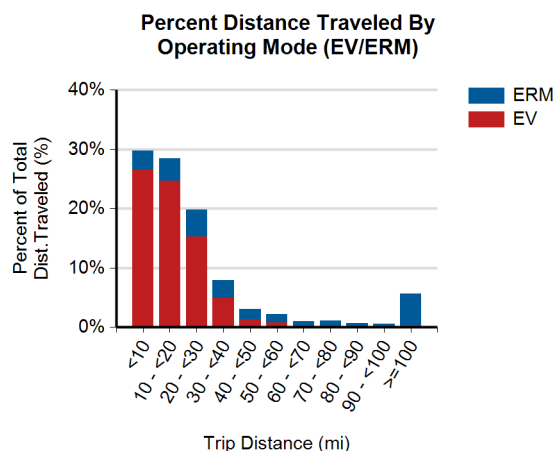
Gasoline fuel economy (mpg)	No Fuel Used
AC electrical energy consumption (AC Wh/mi)	340
Distance traveled (mi)	383,324
Percent of total distance traveled	74.2%

### Extended Range Mode (ERM) Operation

Gasoline fuel economy (mpg)	34.9
AC electrical energy consumption (AC Wh/mi)	No Elec. Used
Distance traveled (mi)	133,131
Percent of total distance traveled	25.8%

### Charging Location

	Home charging location <sup>3</sup>	Away-from-home charging locations <sup>4</sup>	Unknown charging locations <sup>5</sup>
Total number of charging events	15,947	2,603	1,312
Percent of all charging events	80%	13%	7%



1. A trip is defined as all the driving done between consecutive "key-on" and "key-off" events when some distance was traveled.
2. Averages shown in this report are based on a subset of the total miles traveled.
3. Charging events at the "home charging location" refer to charging events performed at the location where the vehicle owner's home charging unit is installed.
4. Charging events at "away-from-home charging locations" refer to charging events performed at any location other than the vehicle's "home charging location."
5. Charging events at "unknown charging locations" were performed when the vehicle's location relative to its "home charging location" is not known, due to GPS data anomalies.

## EV Project Chevrolet Volt Vehicle Summary Report

Region: Houston, TX Metropolitan Area

Number of vehicles: 66

Reporting period: July 2013 through September 2013

### Vehicle Usage

Overall gasoline fuel economy (mpg)	132
Overall electrical energy consumption (AC Wh/mi)	244
Number of trips <sup>1</sup>	22,926
Total distance traveled (mi)	195,525
Avg trip distance (mi) <sup>2</sup>	8.5
Avg distance traveled per day when the vehicle was driven (mi)	39.9
Avg number of trips between charging events	3.2
Avg distance traveled between charging events (mi)	27.2
Avg number of charging events per day when the vehicle was driven	1.5

### Electric Vehicle Mode (EV) Operation

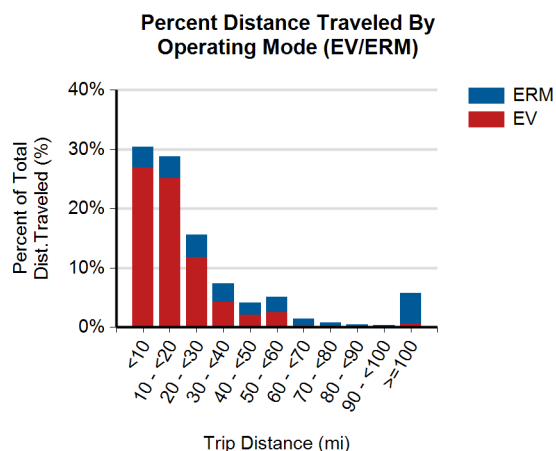
Gasoline fuel economy (mpg)	No Fuel Used
AC electrical energy consumption (AC Wh/mi)	331
Distance traveled (mi)	144,194
Percent of total distance traveled	73.7%

### Extended Range Mode (ERM) Operation

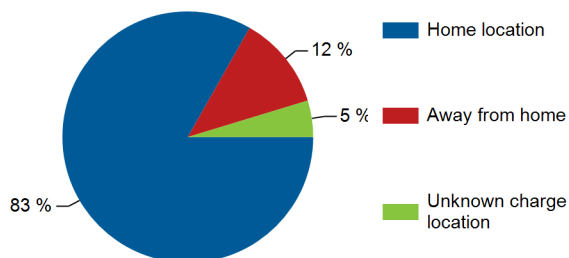
Gasoline fuel economy (mpg)	34.7
AC electrical energy consumption (AC Wh/mi)	No Elec. Used
Distance traveled (mi)	51,331
Percent of total distance traveled	26.3%

### Charging Location

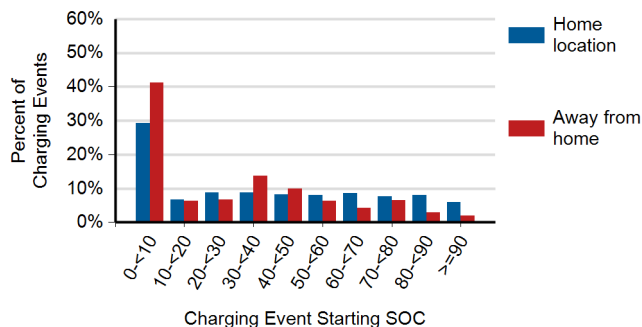
	Home charging location <sup>3</sup>	Away-from-home charging locations <sup>4</sup>	Unknown charging locations <sup>5</sup>
Total number of charging events	5,941	864	335
Percent of all charging events	83%	12%	5%



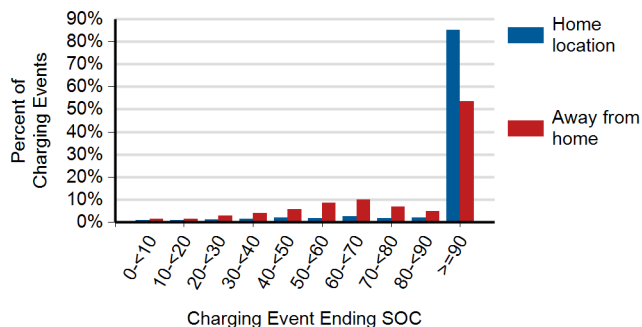
### Frequency of Charging by Charging Location and Type



### Battery State of Charge (SOC) at the Start of Charging Events



### Battery State of Charge (SOC) at the End of Charging Events



1. A trip is defined as all the driving done between consecutive "key-on" and "key-off" events when some distance was traveled.

2. Averages shown in this report are based on a subset of the total miles traveled.

3. Charging events at the "home charging location" refer to charging events performed at the location where the vehicle owner's home charging unit is installed.

4. Charging events at "away-from-home charging locations" refer to charging events performed at any location other than the vehicle's "home charging location."

5. Charging events at "unknown charging locations" were performed when the vehicle's location relative to its "home charging location" is not known, due to GPS data anomalies.

## EV Project Chevrolet Volt Vehicle Summary Report

Region: Washington State

Number of vehicles: 156

Reporting period: July 2013 through September 2013

### Vehicle Usage

Overall gasoline fuel economy (mpg)	142
Overall electrical energy consumption (AC Wh/mi)	223
Number of trips <sup>1</sup>	55,044
Total distance traveled (mi)	451,927
Avg trip distance (mi) <sup>2</sup>	8.0
Avg distance traveled per day when the vehicle was driven (mi)	39.8
Avg number of trips between charging events	3.3
Avg distance traveled between charging events (mi)	26.3
Avg number of charging events per day when the vehicle was driven	1.5

### Electric Vehicle Mode (EV) Operation

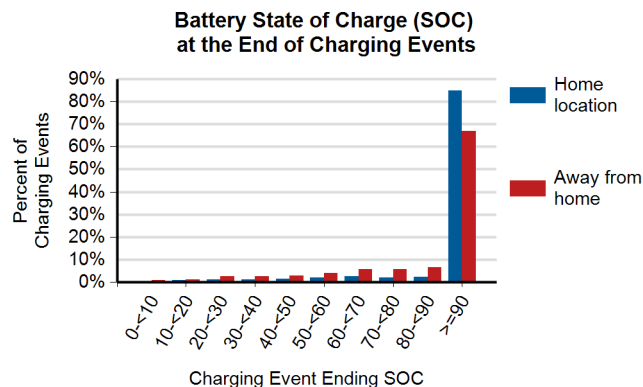
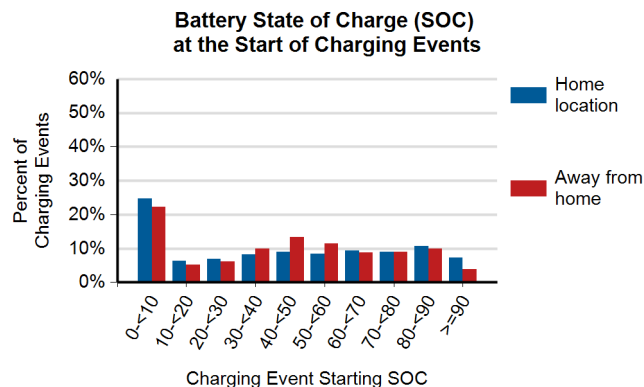
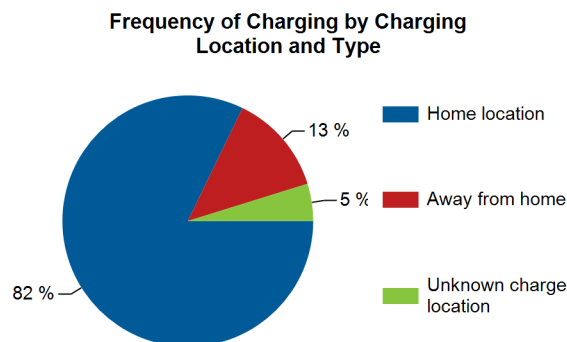
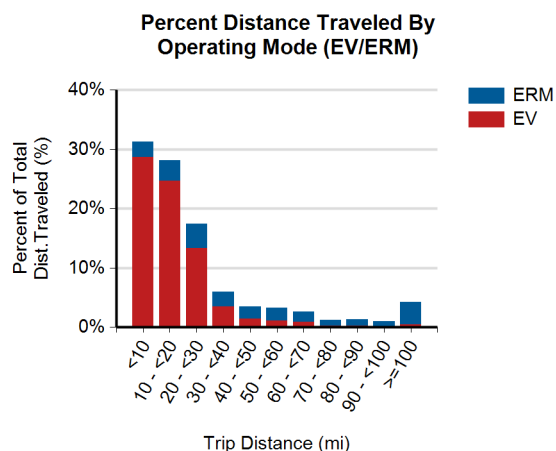
Gasoline fuel economy (mpg)	No Fuel Used
AC electrical energy consumption (AC Wh/mi)	300
Distance traveled (mi)	336,598
Percent of total distance traveled	74.5%

### Extended Range Mode (ERM) Operation

Gasoline fuel economy (mpg)	36.2
AC electrical energy consumption (AC Wh/mi)	No Elec. Used
Distance traveled (mi)	115,330
Percent of total distance traveled	25.5%

### Charging Location

	Home charging location <sup>3</sup>	Away-from-home charging locations <sup>4</sup>	Unknown charging locations <sup>5</sup>
Total number of charging events	13,849	2,194	809
Percent of all charging events	82%	13%	5%



1. A trip is defined as all the driving done between consecutive "key-on" and "key-off" events when some distance was traveled.

2. Averages shown in this report are based on a subset of the total miles traveled.

3. Charging events at the "home charging location" refer to charging events performed at the location where the vehicle owner's home charging unit is installed.

4. Charging events at "away-from-home charging locations" refer to charging events performed at any location other than the vehicle's "home charging location."

5. Charging events at "unknown charging locations" were performed when the vehicle's location relative to its "home charging location" is not known, due to GPS data anomalies.

## EV Project Chevrolet Volt Vehicle Summary Report

Region: Chicago, IL Metropolitan Area

Number of vehicles: 128

Reporting period: July 2013 through September 2013

### Vehicle Usage

Overall gasoline fuel economy (mpg)	156
Overall electrical energy consumption (AC Wh/mi)	218
Number of trips <sup>1</sup>	48,757
Total distance traveled (mi)	424,164
Avg trip distance (mi) <sup>2</sup>	8.6
Avg distance traveled per day when the vehicle was driven (mi)	44.0
Avg number of trips between charging events	3.1
Avg distance traveled between charging events (mi)	27.1
Avg number of charging events per day when the vehicle was driven	1.6

### Electric Vehicle Mode (EV) Operation

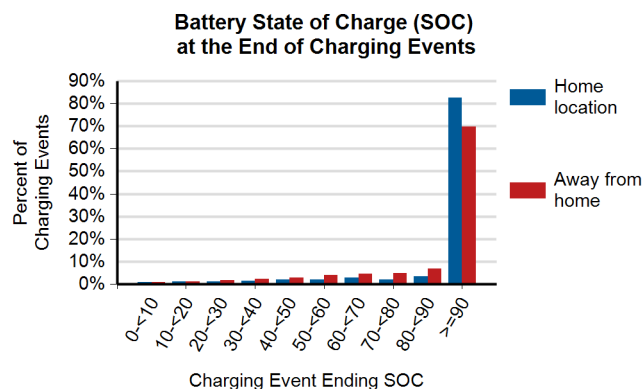
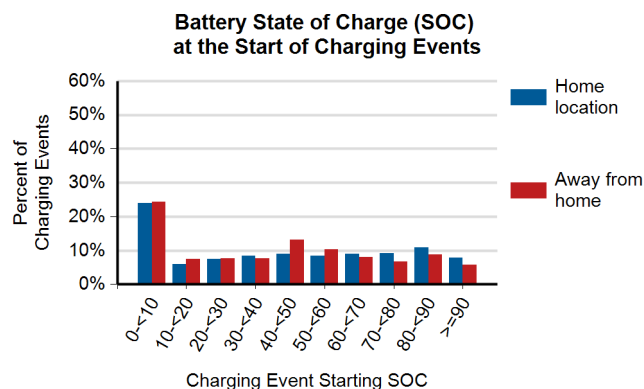
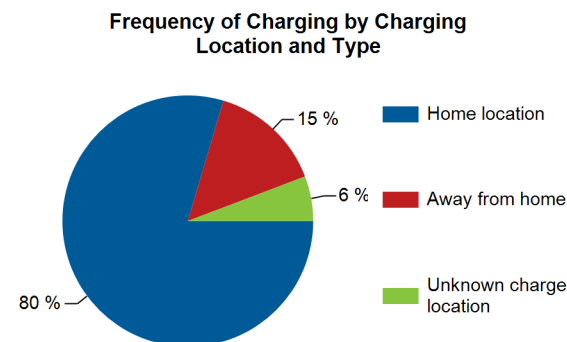
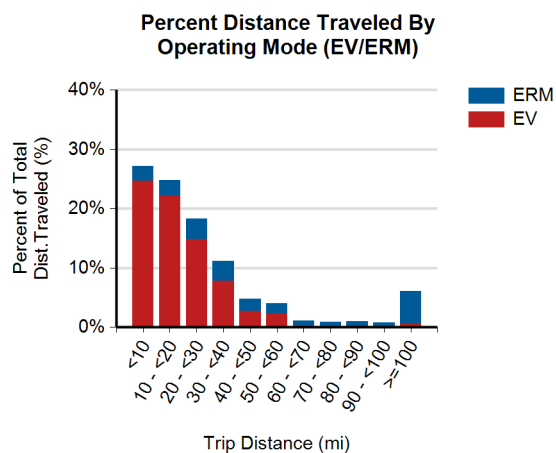
Gasoline fuel economy (mpg)	No Fuel Used
AC electrical energy consumption (AC Wh/mi)	288
Distance traveled (mi)	320,847
Percent of total distance traveled	75.6%

### Extended Range Mode (ERM) Operation

Gasoline fuel economy (mpg)	37.9
AC electrical energy consumption (AC Wh/mi)	No Elec. Used
Distance traveled (mi)	103,317
Percent of total distance traveled	24.4%

### Charging Location

	Home charging location <sup>3</sup>	Away-from-home charging locations <sup>4</sup>	Unknown charging locations <sup>5</sup>
Total number of charging events	12,356	2,272	897
Percent of all charging events	80%	15%	6%



1. A trip is defined as all the driving done between consecutive "key-on" and "key-off" events when some distance was traveled.

2. Averages shown in this report are based on a subset of the total miles traveled.

3. Charging events at the "home charging location" refer to charging events performed at the location where the vehicle owner's home charging unit is installed.

4. Charging events at "away-from-home charging locations" refer to charging events performed at any location other than the vehicle's "home charging location."

5. Charging events at "unknown charging locations" were performed when the vehicle's location relative to its "home charging location" is not known, due to GPS data anomalies.



## EV Project Chevrolet Volt Vehicle Summary Report

Region: Atlanta, GA Metropolitan Area

Number of vehicles: 69

Reporting period: July 2013 through September 2013

### Vehicle Usage

Overall gasoline fuel economy (mpg)	122
Overall electrical energy consumption (AC Wh/mi)	217
Number of trips <sup>1</sup>	24,817
Total distance traveled (mi)	234,579
Avg trip distance (mi) <sup>2</sup>	9.4
Avg distance traveled per day when the vehicle was driven (mi)	44.8
Avg number of trips between charging events	3.3
Avg distance traveled between charging events (mi)	30.6
Avg number of charging events per day when the vehicle was driven	1.5

### Electric Vehicle Mode (EV) Operation

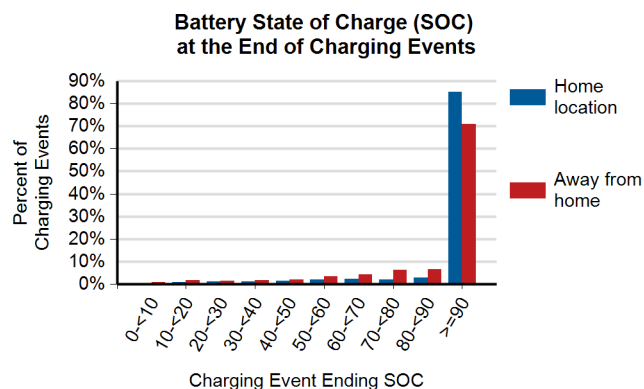
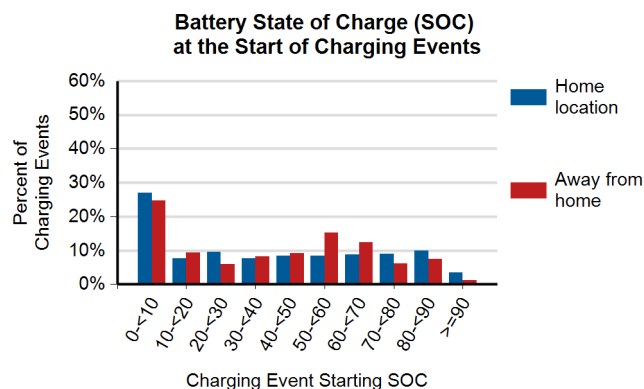
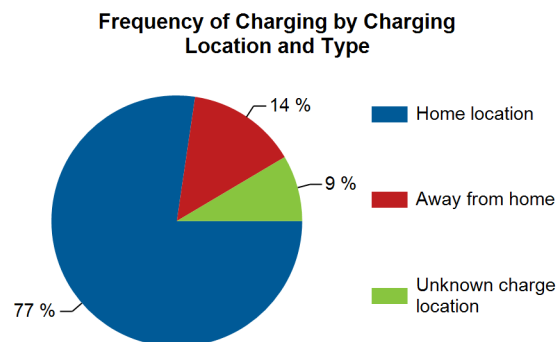
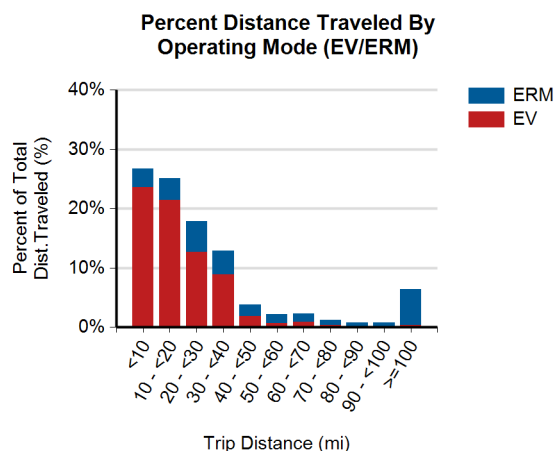
Gasoline fuel economy (mpg)	No Fuel Used
AC electrical energy consumption (AC Wh/mi)	307
Distance traveled (mi)	166,130
Percent of total distance traveled	70.8%

### Extended Range Mode (ERM) Operation

Gasoline fuel economy (mpg)	35.7
AC electrical energy consumption (AC Wh/mi)	No Elec. Used
Distance traveled (mi)	68,449
Percent of total distance traveled	29.2%

### Charging Location

	Home charging location <sup>3</sup>	Away-from-home charging locations <sup>4</sup>	Unknown charging locations <sup>5</sup>
Total number of charging events	5,892	1,079	648
Percent of all charging events	77%	14%	9%



1. A trip is defined as all the driving done between consecutive "key-on" and "key-off" events when some distance was traveled.

2. Averages shown in this report are based on a subset of the total miles traveled.

3. Charging events at the "home charging location" refer to charging events performed at the location where the vehicle owner's home charging unit is installed.

4. Charging events at "away-from-home charging locations" refer to charging events performed at any location other than the vehicle's "home charging location."

5. Charging events at "unknown charging locations" were performed when the vehicle's location relative to its "home charging location" is not known, due to GPS data anomalies.

## EV Project Chevrolet Volt Vehicle Summary Report

Region: Philadelphia, PA Metropolitan Area

Number of vehicles: 49

Reporting period: July 2013 through September 2013

### Vehicle Usage

Overall gasoline fuel economy (mpg)	107
Overall electrical energy consumption (AC Wh/mi)	193
Number of trips <sup>1</sup>	19,016
Total distance traveled (mi)	168,676
Avg trip distance (mi) <sup>2</sup>	8.6
Avg distance traveled per day when the vehicle was driven (mi)	46.1
Avg number of trips between charging events	3.6
Avg distance traveled between charging events (mi)	31.1
Avg number of charging events per day when the vehicle was driven	1.5

### Electric Vehicle Mode (EV) Operation

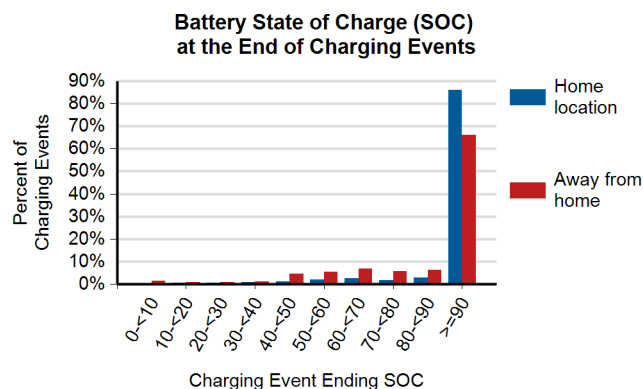
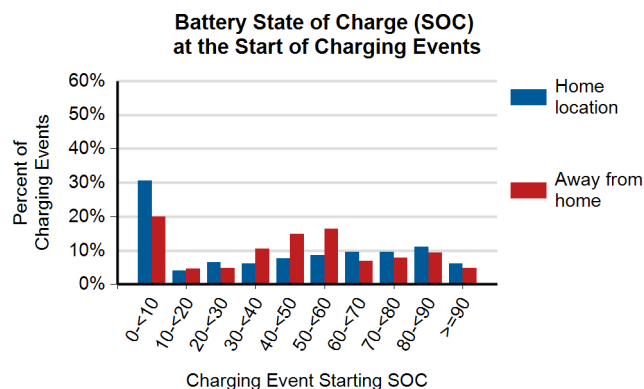
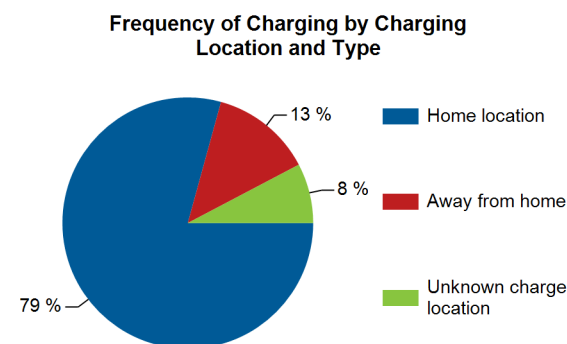
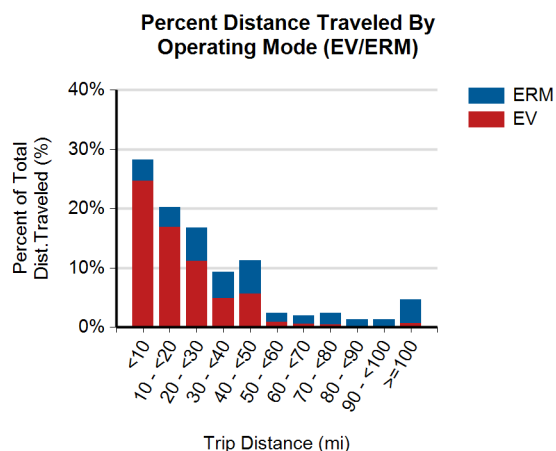
Gasoline fuel economy (mpg)	No Fuel Used
AC electrical energy consumption (AC Wh/mi)	298
Distance traveled (mi)	109,439
Percent of total distance traveled	64.9%

### Extended Range Mode (ERM) Operation

Gasoline fuel economy (mpg)	37.6
AC electrical energy consumption (AC Wh/mi)	No Elec. Used
Distance traveled (mi)	59,237
Percent of total distance traveled	35.1%

### Charging Location

	Home charging location <sup>3</sup>	Away-from-home charging locations <sup>4</sup>	Unknown charging locations <sup>5</sup>
Total number of charging events	4,153	683	403
Percent of all charging events	79%	13%	8%



1. A trip is defined as all the driving done between consecutive "key-on" and "key-off" events when some distance was traveled.

2. Averages shown in this report are based on a subset of the total miles traveled.

3. Charging events at the "home charging location" refer to charging events performed at the location where the vehicle owner's home charging unit is installed.

4. Charging events at "away-from-home charging locations" refer to charging events performed at any location other than the vehicle's "home charging location."

5. Charging events at "unknown charging locations" were performed when the vehicle's location relative to its "home charging location" is not known, due to GPS data anomalies.