



Vehicle Technologies Program

North American PHEV Demonstration

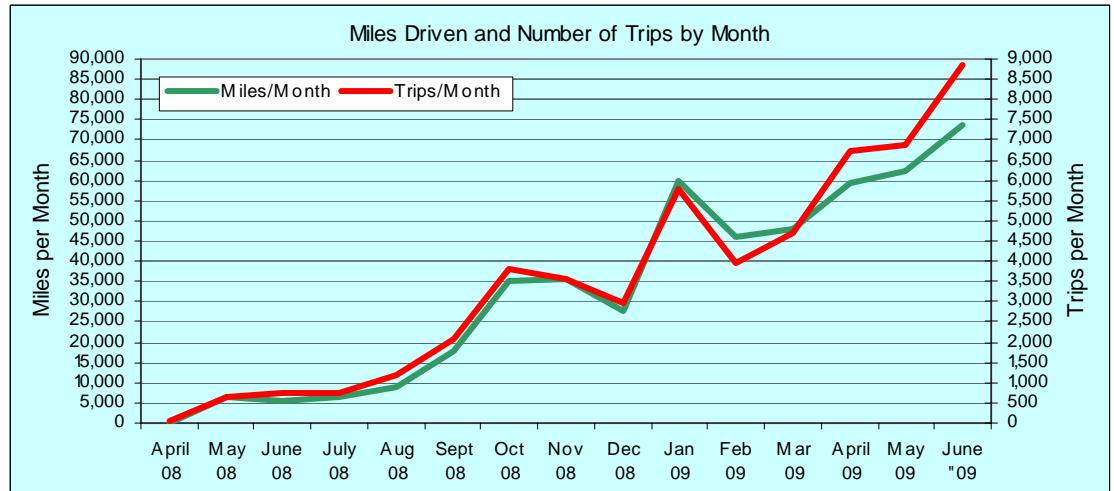
Monthly Summary Report - Hymotion Prius (V2Green data logger) **Advanced Vehicle Testing Activity**

Total Number Vehicles – 110 (June 2009)

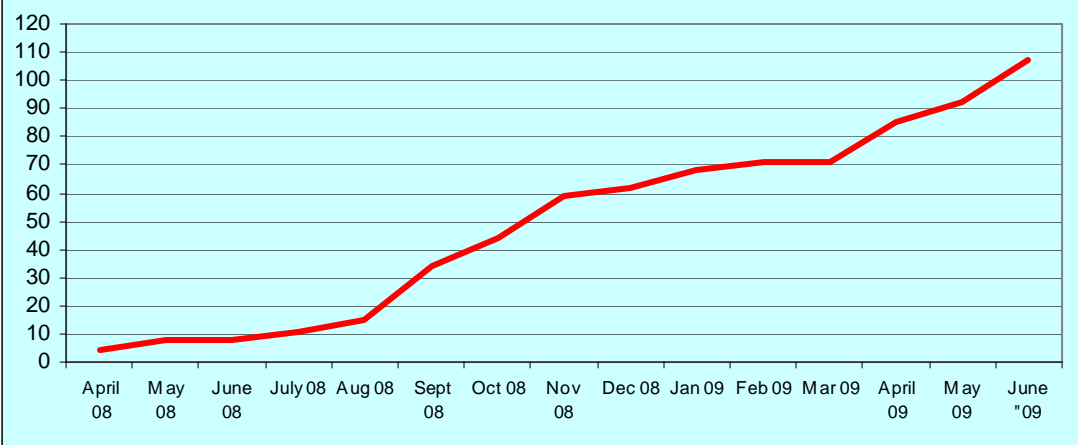
Total Cumulative Test Miles – 498,433 Miles (June 2009)

Total Cumulative Trips – 53,565 Trips (June 2009)

Monthly miles driven and trips taken

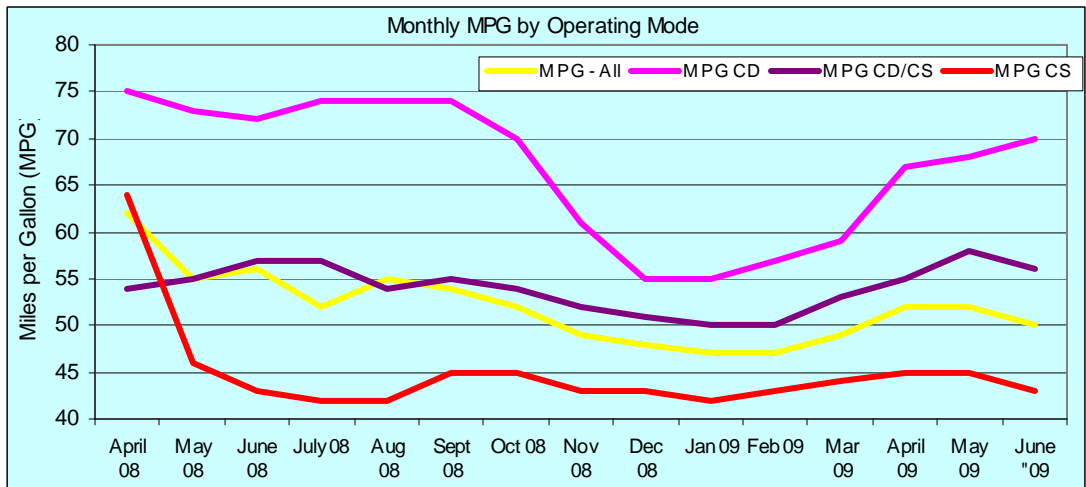


Number of Hymotion Prius PHEVs with V2Green Data Loggers by Month



Number of Hymotion Prius PHEVs providing data each month via V2Green data loggers

Monthly miles per gallon by operating mode*



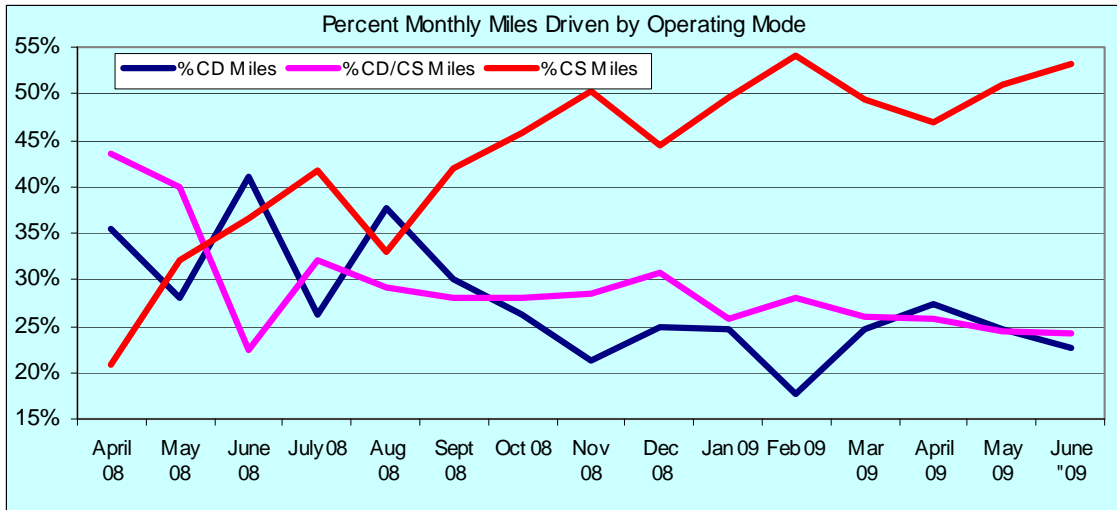


North American PHEV Demonstration

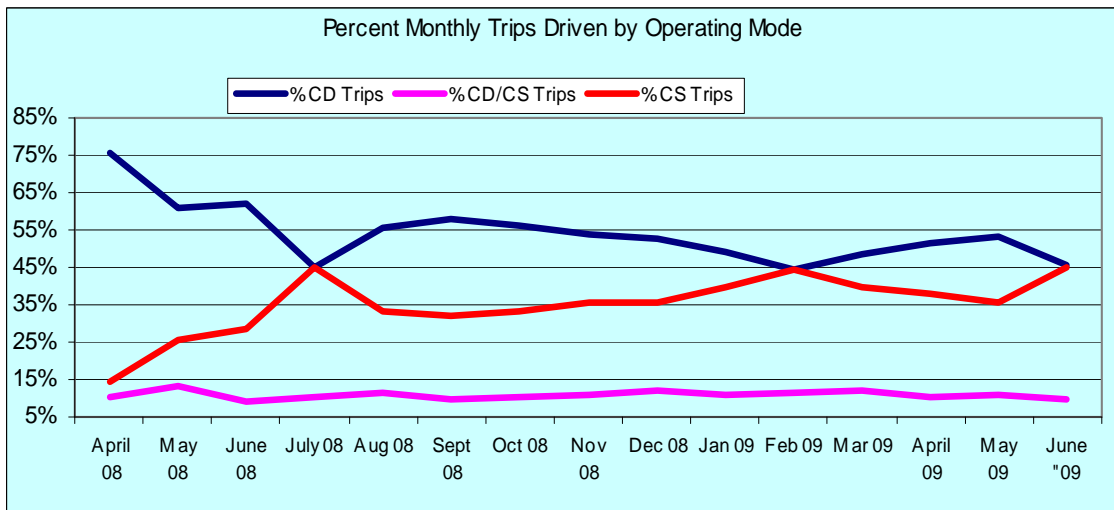
Vehicle Technologies Program

Monthly Summary Report - Hymotion Prius (V2Green data logger) Advanced Vehicle Testing Activity

Percent of miles driven each month by operating mode



Percent of trips driven each month by operating mode



*CD – PHEV battery is being Charge Depleted the entire trip. CS – The battery is Charge Sustained the entire trip because either the PHEV battery was fully depleted before starting the trip or the battery was turned off. CD/CS – the trip started in CD mode but went to CS mode before trip end.